

Clinical Application Series

VISICOIL™ Marker Implantation Trends

VISICOIL fiducial markers are widely used in radiation therapy and IGRT. Over 10,000 patients annually benefit from higher targeting accuracy. Typical indications and implantation approaches are listed below:*

Prostate

- 2 x 1 cm VISICOIL markers placed on each side of the urethra in the left and right lobe of the prostate. All 4 marker end points used for tumor targeting
- Alternative application: 3 x 0.5 cm VISICOIL markers placed in the base, mid-gland and apex triangulation

Lung

- Percutaneous implantation: Typically up to 3 VISICOIL markers (1 placed in the lesion, 2 optionally outside the lesion)
- Superdimension bronchoscopy approach: Usually 4 or 5 VISICOIL markers implanted in and around the tumor

Liver

- Typically 1 VISICOIL marker inside the tumor, one optional marker outside the tumor

Breast

- Physician's office: Generally 2 or 3 VISICOIL markers implanted under ultrasound for guidance during IGRT
- Breast surgeon: 4 VISICOIL markers typically implanted at the end of a lumpectomy in a hospital, also to aid in IGRT and follow up

Pancreas

- Generally 2 x 0.5 cm VISICOIL markers implanted via endoscopic ultrasound (EUS)

Esophagus / Bladder

- Typically 2 VISICOIL markers implanted in and or around the lesion

Cervix

- Generally 2 VISICOIL markers implanted

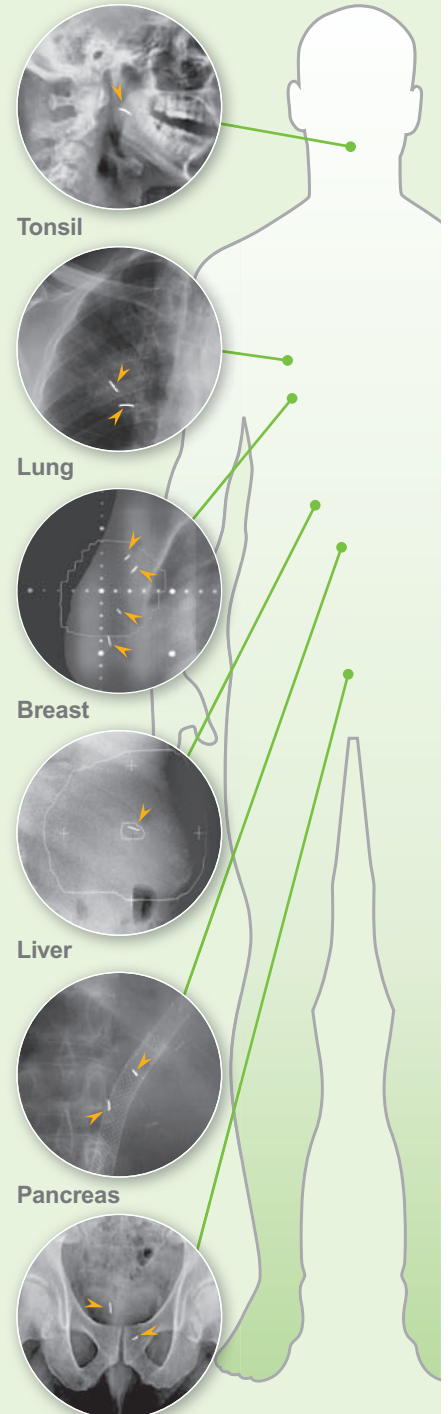
Fossa Bed Prostate

- Generally 3 VISICOIL markers implanted

Tongue, Tonsil

- Typically 1 VISICOIL marker implanted

VISICOIL Clinical Application



Prostate/
Bladder/
Cervix

* Implantation examples only! Do not rely on any information provided in this flyer when implanting VISICOIL into a patient. Refer to scientific publications (available upon request from IBA). Annual patient numbers estimated based on 2-3 VISICOIL per patient.

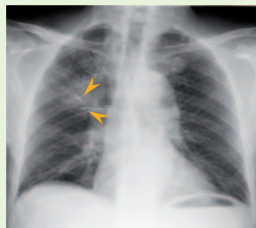
VISICOIL™
LINEAR FIDUCIAL MARKER



Safety, Efficiency and Clinical Confidence in Tumor Targeting

Patient Safety

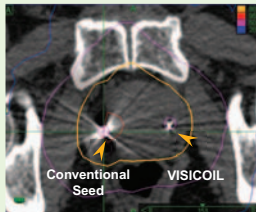
- Non-migrating design
- Visualizing tissue deformation and motion



Lung, kV image

Treatment Efficiency

- Faster patient set-up based on unambiguous marker geometry
- One marker – two reference points



Prostate CT (minimized artifacts)

Clinical Confidence

- Accurate tumor targeting at planning and treatment due to minimized artifacts



Two VISICOIL markers
0.5 mm x 1 cm

Contact Details:

Europe, Middle East, Africa

IBA Dosimetry GmbH
Bahnhofstr. 5
90592 Schwarzenbruck, Germany
Tel.: +49 9128 607 0
Fax: +49 9128 607 10
Email: info@iba-dosimetry.com

North America, Latin America

IBA Dosimetry America
3150 Stage Post Drive, Suite 110
Bartlett, TN 38133
Tel.: +1 901 432 7202
Fax: +1 901 432 7206
Toll Free: 866 429 0922
Email: visicoil@iba-group.com

Asia Pacific

IBA Dosimetry Asia Pacific
No.6, Xing Guang Er Jie Beijing
OPTO-mechatronics
Industrial Park (OIP)
Tongzhou District
Beijing 101111, China
Tel.: +86 10 8080 9288
Fax: +86 10 8080 9299
Email: info@iba-dosimetry.com

www.VISICOIL.com

Protect,
enhance
and save
lives