



www.orion-france.com

Radiation Oncology Product Catalog



HN	HEAD AND NECK	6
	HeadSTEP	8
	HS PushPIN & HS S-TYPE	16
	Fraxion	20
BT	BREAST AND THORAX	30
	BodyFIX	32
	WingSTEP	42
	BreastSTEP	48
HP	HIP AND PELVIC	54
	BellySTEP	56
	ProSTEP	60
MS	MR STEP	66
TO	TRACKING AND OVERLAY	72
	iBEAM evo Couchtop	74
	CT Overlay	78
	Gold Marker	82
AC	ACCESSORIES	84
	TattooSTEP	86
	FoamSTEP	88
	MarkerSTEP	90
	Beekley SPOTS	90
	Bolus	94
	MoldCARE	96
	Vacuum Cushion	98

Head and Neck

HEAD AND NECK

HeadSTEP

HS PushPIN

HS S-TYPE

Fraxion

HAN

Head and Neck



Back in the same place? But how precisely?

HeadSTEP

The **HeadSTEP** is equipped with a unique iFRAME making it one of the most precise head immobilization systems on the market. Excellent robustness and easy handling, as well as quality, all combine to guarantee it is very accurate for routine cranial treatment, as well as head, neck and shoulder immobilization. The HeadSTEP system is designed to precisely house the disposable iFRAME and iCAST thermoplastic material. The **iFRAME** allows easy molding and symmetrical pull-down by one therapist. The joint of the wing-shaped iFRAME is one of the great advantages of the system, combining total coverage of the anterior, lateral and superior head regions when the iFRAME locks into the shaped channels, thereby minimizing the rotation of the head in all three axes. The low-temperature iCAST thermoplastic is available in a variety of perforation patterns. Its rigidity, resistance to shrinkage and easy molding quality is outstanding. The **HeadSTEP system** uses a 23-step elevation mechanism, which permits immobilization at variable head angles without the use of wedges. It can be used on all commercially available couches and is also indexable for enhanced reproducibility.



HeadSTEP – Advantages

WHY

HeadSTEP

- + Symmetrical pull-down
- + Quick and easy molding – done by one person
- + Variable head angles without any wedges
- + iFRAME – wing profile frame with a joint
- + Minimizes rotation of the head in all three axes
- + Optimizes repositioning accuracy for fractionated treatments
- + Saves time and simplifies radiation therapy procedures
- + Compatible with all common couchtops
- + Integrated indexing system

HeadSTEP – Systems



System HeadSTEP Shoulder



The HeadSTEP Shoulder system is designed for routine head and shoulder immobilization. It includes a height adjustment with 23 angles and a shoulder adapter. Consisting of:

- HeadSTEP Shoulder Basic Module (P10107-413/429)
- Pillow A, B, C, D, Y, Z, Distance Plate (P10107-200/201/202/203/204/205/206)
- HeadSTEP Shoulder Adapter Extension (P10107-407)
- HeadSTEP Shoulder Comfort Module (P10107-411)

ART.-NR.	P10107-706	System HeadSTEP Shoulder
ART.-NR.	P10107-711	System HeadSTEP Shoulder MR

System HeadSTEP Carbon



The HeadSTEP Carbon system is designed for routine head and neck immobilization. It includes a height adjustment with 23 angles. Consisting of:

- HeadSTEP Carbon Basic Module (P10107-100)
- Pillow A, B, C, D, Y, Z, Distance Plate (P10107-200/201/202/203/204/205/206)
- Indexing Adapter (P10107-406)

ART.-NR.	P10107-700	System HeadSTEP Carbon
----------	------------	------------------------

System HeadSTEP Flat



The HeadSTEP Flat system is designed for routine head and neck immobilization. Consisting of:

- HeadSTEP Carbon Flat Basic Module (P10107-101)
- Pillow A, B, C, D, Y, Z, Distance Plate (P10107-200/201/202/203/204/205/206)
- Indexing Adapter (P10107-406)

ART.-NR.	P10107-703	System HeadSTEP Flat
----------	------------	----------------------

System HeadSTEP MR



The HeadSTEP MR system is designed for routine head and neck immobilization in the MRI. It includes a height adjustment with 23 angles. Consisting of:

- HeadSTEP MR Basic Module (P10107-400)
- Pillow A, B, D, Y, Z (P10107-255/256/257/261/262)
- Indexing Adapter (P10107-406)

ART.-NR.	P10107-704	System HeadSTEP MR
----------	------------	--------------------

HeadSTEP – Systems



System HeadSTEP iBEAM evo Extension



The HeadSTEP iBEAM evo extension system is designed for routine head and shoulder immobilization using the iBEAM evo Couchtop and extends the end of the iBEAM evo couchtop by 515/615 mm. It includes a height adjustment with 23 angles and shoulder adapter. Consisting of:

- HeadSTEP iBEAM evo Basic Module (P10107-402/472)
- Pillow A, B, C, D, Y, Z, Distance Plate (P10107-200/201/202/203/204/205/206)
- HeadSTEP Shoulder Adapter Extension (P10107-407)

ART.-NR.	P10107-702	System HeadSTEP iBEAM evo Extension
	P10107-708	System HeadSTEP iBEAM evo Extension long

System HeadSTEP IMRT



The HeadSTEP IMRT is designed for routine head and shoulder immobilization using a normal couchtop and extends the end of the couchtop. It includes a height adjustment with 23 angles and a shoulder adapter. Consisting of:

- HeadSTEP IMRT Basic Module (P10107-412)
- Pillow A, B, C, D, Y, Z, Distance Plate (P10107-200/201/202/203/204/205/206)
- HeadSTEP Shoulder Adapter Extension (P10107-407)

ART.-NR.	P10107-705	System HeadSTEP IMRT
	P10107-715	System HeadSTEP IMRT MR

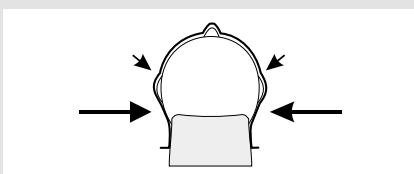
System HeadSTEP Bite



HeadSTEP Bite is an extended module of the HeadSTEP system providing high precision positioning and re-positioning for IMRT and stereotactic radiation. Consisting of:

- HeadSTEP Bite Post Set (P10107-447)
- HeadSTEP Bite Angulating Fixation Set (P10107-448/449)
- HeadSTEP Bite Silicon Covers (50 pcs) (P10107-450)
- HeadSTEP Bite Quick Release (P10107-451)

ART.-NR.	P10107-789	System HeadSTEP Bite
	P10107-791	System HeadSTEP Bite wide



The iFRAME allows easy molding and symmetrical pull-down of the warmed-up mask material by one therapist. The joint of the wing shaped iFRAME is one of the great advantages of the system, combining the total coverage of the anterior, lateral and superior head regions with the iFRAME locked in the shaped channels, minimizing the rotation of the head in all three axes.

HeadSTEP – Disposables



iCAST Precut Head

iCAST mask material for head immobilization including disposable iFRAME.

ART.-NR.	P10107-300	iCAST Head Maxi 2mm
	P10107-301	iCAST Head Micro 2mm
	P10107-312	iCAST Head Maxi with mouth port 2 mm
	P10107-313	iCAST Head Micro with mouth port 2 mm



iCAST Precut Neck

iCAST mask material for head and neck immobilization including disposable iFRAME.

ART.-NR.	P10107-302	iCAST H&N Maxi 2 mm
	P10107-303	iCAST H&N Micro 2 mm
	P10107-314	iCAST H&N Maxi with mouth port 2 mm
	P10107-315	iCAST H&N Micro with mouth port 2 mm



iCAST Precut Shoulder

iCAST mask material for head and shoulder immobilization including disposable iFRAME.

ART.-NR.	P10107-304	iCAST H&S Maxi 2 mm
	P10107-305	iCAST H&S Micro 2 mm
	P10107-316	iCAST H&S Maxi with mouth port 2 mm
	P10107-317	iCAST H&S Micro with mouth port 2 mm



iCAST Precut Head Double

iCAST mask material for stereotactic head immobilization including disposable iFRAME.

ART.-NR.	P10107-306	iCAST Head Maxi Double 4mm
	P10107-307	iCAST Head Micro Double 4mm
	P10107-318	iCAST Head Double Maxi with mouth port 4 mm
	P10107-319	iCAST Head Double Micro with mouth port 4 mm



iCAST Precut Shoulder Double

iCAST mask material for stereotactic head/shoulder immobilization including disposable iFRAME.

ART.-NR.	P10107-310	iCAST H&S Maxi Head Double 4 mm
	P10107-311	iCAST H&S Micro Head Double 4 mm
	P10107-322	iCAST H&S Micro Shoulder Double 4 mm
	P10107-323	iCAST H&S Micro Head Double with mouth port 4 mm
	P10107-328	iCAST H&S Micro with support band 2 mm
	P10107-329	iCAST H&S Micro with support band mouth port 2 mm



iCAST Precut Paediatric

iCAST mask material for head immobilization including disposable iFRAME. Small Precuts especially for Paediatric use.

ART.-NR.	P10107-324	iCAST Head Paediatric Maxi 2 mm
	P10107-325	iCAST Head Paediatric Micro 2 mm
	P10107-332	iCAST Head Maxi Paediatric with mouth port 2 mm
	P10107-333	iCAST Head Micro Paediatric with mouth port 2 mm

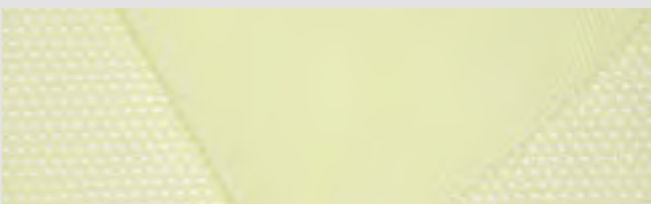


iCAST Chin Double Mask

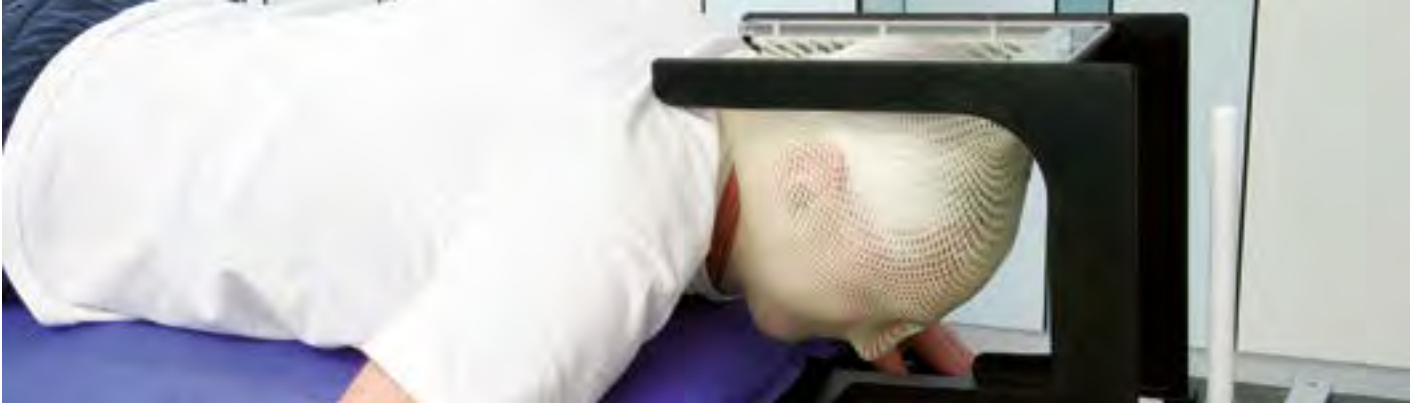
iCAST mask material for head immobilization including disposable iFRAME.

ART.-NR.	P10107-334	iCAST Chin Double 4 mm
----------	------------	------------------------

iCAST Perforation Maxi/Micro



HeadSTEP – Components



HeadSTEP Bite

HeadSTEP Bite is an extended module of the HeadSTEP system providing high precision positioning and re-positioning for IMRT and stereotactic radiation.

ART.-NR.	P10107-447	HeadSTEP Bite Post Set
	P10107-448	HeadSTEP Bite Angulating Fixation Set Cranial
	P10107-449	HeadSTEP Bite Angulating Fixation Set H&N
	P10107-450	HeadSTEP Bite Silicon Covers (50 pcs)
	P10107-451	HeadSTEP Bite Quick Release



ProneSTEP

ProneSTEP is an extended module of the HeadSTEP system applicable for head immobilization in prone position.

ART.-NR.	P10107-403	ProneSTEP
----------	------------	-----------



HeadSTEP Basic Module without components

Basic module without pillows, indexing adapter and distance plate.

P10107-100 HeadSTEP Carbon Basic Module

ART.-NR.	P10107-100	HeadSTEP Carbon Basic Module
	P10107-101	HeadSTEP Carbon Flat Basic Module
	P10107-400	HeadSTEP MR Basic Module
	P10107-402	HeadSTEP iBEAM evo Extension Basic Module
	P10107-412	HeadSTEP IMRT Basic Module
	P10107-413	HeadSTEP Shoulder Basic Module
	P10107-429	HeadSTEP Shoulder MR Basic Module
	P10107-472	HeadSTEP iBEAM evo Extension Basic Module long



Low density Head Rest

Low density Head Rest for supine position with centering disc.

ART.-NR.	P10107-211	Pillow Standard A – Low Density
	P10107-212	Pillow High B – Low Density
	P10107-213	Pillow Tilt D – Low Density
	P10107-214	Pillow Short Neck E – Low Density
	P10107-215	Pillow Small F – Low Density
	P10107-217	Pillow Tilt Small G – Low Density



Water Bath

Water Bath H x W x D: 95 x 690 x 510 mm, 1400W, 230V, 26L.

ART.-NR.	P10107-600	Waterbath
----------	------------	-----------



Electric Air Flow Oven

Inner dimension: H x W x D: 696 x 463 x 255 mm, External dimension: H x W x D: 800 x 770 x 429 mm, 230 V, 50 Hz.

ART.-NR.	P10107-602	Air Flow Oven
----------	------------	---------------

HeadSTEP – Components



GreyBAG

The GreyBAG is a vacuum cushion for customized positioning molds for HeadSTEP systems.

ART.-NR.	P10107-207	GreyBAG Adapter
	P10107-208	GreyBAG



HeadSTEP Shoulder Adapter

The HeadSTEP shoulder Adapter is designed for routine head and shoulder immobilization as an addition for the HeadSTEP system.

ART.-NR.	P10107-404	HeadSTEP Shoulder Adapter
	P10107-407	HeadSTEP Shoulder Adapter Extension



HeadSTEP Indexing Adapter

The indexing adapter enables a reproducible attachment of the HeadSTEP directly on an indexed CT or a linac couch by using standard indexing bars.

ART.-NR.	P10107-406	HeadSTEP Indexing Adapter
	P10107-433	HS Indexing Adapter Elekta 530



Distance Plate

2mm distance plate for HeadSTEP pillows.

ART.-NR.	P10107-205	Distance Plate
----------	------------	----------------



Transparent Head Rest

Transparent Head Rest for supine position with centering disc.

ART.-NR.	P10107-225	Pillow Standard A – Low Density Transparent
	P10107-226	Pillow High B – Low Density Transparent
	P10107-227	Pillow tilt D – Low Density Transparent
	P10107-228	Pillow Short Neck E – Low Density Transparent
	P10107-229	Pillow Small F – Low Density Transparent
	P10107-230	Pillow tilt small G – Low Density Transparent

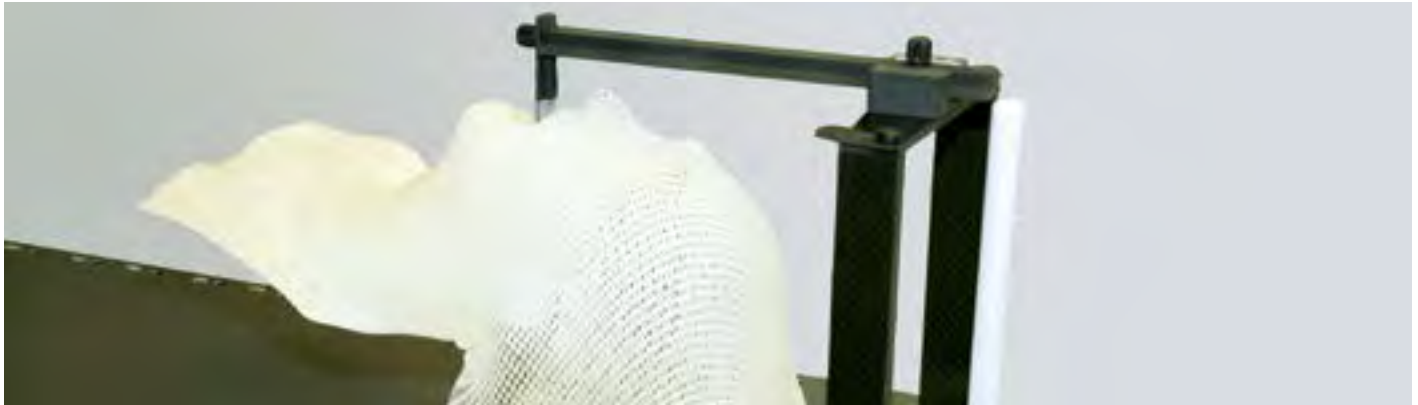


HeadSTEP Upper Plate

The HeadSTEP upper plate uses the iCAST masks together with HeadSTEP pillows.

ART.-NR.	P10107-434	HeadSTEP Upper Plate
	P10107-430	HeadSTEP Height Adjustment

HeadSTEP – Components



Pillow Prone

Head rest for prone position with centering disc.

ART.-NR.	P10107-203	Pillow Prone Large Y
	P10107-204	Pillow Prone Small Z



Pillow Tilt

Head rest for tilted supine position with centering disc.

ART.-NR.	P10107-206	Pillow Tilt D
	P10107-216	Pillow Tilt Small G



HeadSTEP Wedge

High precision wedge for HeadSTEP pillows, 10° angle.

ART.-NR.	P10107-202	Pillow Wedge C
----------	------------	----------------



Head Rest

Head rest for supine position with centering disc.

ART.-NR.	P10107-200	Pillow Standard Black A
	P10107-201	Pillow High Black B
	P10107-209	Pillow Short Neck E
	P10107-210	Pillow Small F



Pillow Block

Elevation block for the HeadSTEP.

ART.-NR.	P10107-218	Pillow Block H
----------	------------	----------------

HeadSTEP – Components



HeadSTEP Independent Indexing Clamp

The Independent Indexing Clamp enables the reproducible attachment of the HeadSTEP directly on a non-indexed CT or linac couch with 500 or 530 mm width.

ART.-NR.	P10107-405	HS Independent Indexing Clamp 530 mm
	P10107-408	HS Independent Indexing Clamp 500 mm
	P10107-632	HS Independent Indexing Clamp 500 mm Offcentered



HS Independent Indexing Clamp Carbon

The Independent Indexing Clamp enables the reproducible attachment of the HeadSTEP directly on a non-indexed CT or linac couch with 500 or 530 mm width.

ART.-NR.	P10107-431	HS Independent Indexing Clamp 530 mm Carbon
	P10107-432	HS Independent Indexing Clamp 500 mm Carbon



Wall Holder

Wall holder for storing the HeadSTEP Shoulder and iBEAM evo systems.

ART.-NR.	P10107-494	Wall holder for HS iBEAM evo extension
	P10107-495	Wall holder for HS Shoulder



Comfort Module

The Comfort Module provides a comfortable positioning of the upper body on the HeadSTEP Shoulder system.

ART.-NR.	P10107-411	Comfort Module
----------	------------	----------------

HeadSTEP simple steps



Set the HeadSTEP system on the tabletop.



Out of 23 different possibilities choose a suitable position and add the correct pillow.



Position the patient's head in the head support.



Center the iFRAME with the iCAST mask material over the patient's face.

HeadSTEP – Components



Indexing Bar Carbon

The Indexing Bar Carbon is used for indexed fitting and positioning of adequate accessories on indexed tabletops.

ART.-NR.	P10107-409	Indexing Bar 14 Carbon for Elekta (2 pcs)
	P10107-609	Indexing Bar 14 Carbon for Varian (2 pcs)
	P10107-610	Indexing Bar 14 Carbon for Pin Indexing (2 pcs)



Indexing Bar Standard

The Indexing Bar Standard is used for indexed fitting and positioning of adequate accessories on indexed tabletops.

ART.-NR.	P10105-110	Indexing Bar 14 Standard for Elekta (3 pcs)
	P10107-611	Indexing Bar 14 Standard for Varian
	P10107-612	Indexing Bar 14 Standard for Pin Indexing



Indexing Bar Off-centered

The Indexing Bar Off-centered is used for indexed fitting and positioning of adequate accessories on indexed tabletops with off-centered indexing points.

ART.-NR.	P10107-631	Indexing Bar 100 mm Off-centered for Elekta
	P10107-630	Indexing Bar 100 mm Off-centered for Varian
	P10107-666	Indexing Bar 100 mm Off-centered Carbon for Elekta
	P10107-665	Indexing Bar 100 mm Off-centered Carbon for Varian



U7 Indexing Bar Standard

The U7 Indexing Bar Standard is used for indexed fitting and positioning of adequate accessories on indexed tabletops. This indexing bar allows intermediate indexing steps.

ART.-NR.	P10107-622	U7 Indexing Bar Standard for Elekta
	P10107-628	U7 Indexing Bar Standard for Varian



Pull the iCAST mask material gently, carefully and steadily over the patient's face, starting at the chin, until the outer frame touches the baseplate.



Snap the frame into the designated bracket on the baseplate and lock it on the back end of the HeadSTEP.



Mold the mask material around the patient's facial outline. The molding of the nose bridge is of crucial importance, as this is the reference point of the mask.



Mold around the chin and the eyes, advising the patient to keep the eyes closed. Let the mask cool off for 5 minutes until it is really hardened.

HS PushPIN HS S-TYPE

The **HS iBEAM evo PushPIN Extension** as well as the **HS iBEAM evo S-TYPE Extension** allow precise treatment of the head and neck area. They are designed for IMRT as well as for conformal therapy and allow of 360° treatment with minimal radiation absorption. Thanks to the ease of use and high production quality, accurate repositioning can be ensured. The PushPIN concept allows easy shaping of the patient head by uniformly drawing out the heated mask material. The S-TYPE system also allows easy casting of the patient head by uniform, symmetrical thermoforming of the heated mask material. This step can be carried out quickly and easily by one person.

Both systems have been specifically optimized for use with the low-temperature thermoplast BlueFIX and a one-way frame. BlueFIX is available with various perforations and is characterized by excellent stiffness and shrinkage resistance after cooling. With the PushPIN or the S-TYPE system, you opt for a high-quality mask positioning for the head and neck area, with easy handling, stability and precision.



HS PushPIN & HS S-TYPE – Advantages

WHY

HS PushPIN HS S-TYPE

- + Accurate positioning and exact repositioning
- + Easy handling and high positioning comfort
- + Simple mask preparation
- + Adjustable bearing angle with wedge insert
- + BlueFIX mask material
- + Maximum longevity
- + Compatible with all tabletops
- + Made of metal-free materials of the highest quality

HS PushPIN & HS S-TYPE – Systems



System HS iBEAM evo extension PushPIN

The system HS iBEAM evo extension PushPIN is designed for routine head and shoulder immobilization. Consisting of:

HS iBEAM evo extension Basic Module PushPIN (P10107-414/416)
 Pillow A, B, C, D, Y, Z PushPIN (P10107-244/245/246/247/250/251)
 Distance Plate PushPIN (P10107-252)

ART.-NR.	P10107-712	System HS iBEAM evo extension PushPIN
	P10107-709	System HS iBEAM evo extension PushPIN long



System HS iBEAM evo extension S-TYPE

The system HS iBEAM evo extension S-TYPE is designed for routine head and shoulder immobilization. Consisting of:

HS iBEAM evo extension Basic Module S-TYPE (P10107-415/419)
 Pillow A, B, C, D, Y, Z, Distance Plate (P10107-200/201/202/203/204/205/206)
 Pillow Adapter S-TYPE (P10107-253)

ART.-NR.	P10107-716	System HS iBEAM evo extension S-TYPE
	P10107-717	System HS iBEAM evo extension S-TYPE long
	P10107-718	System HS S-TYPE Carbon
	P10107-719	System HS S-TYPE MR



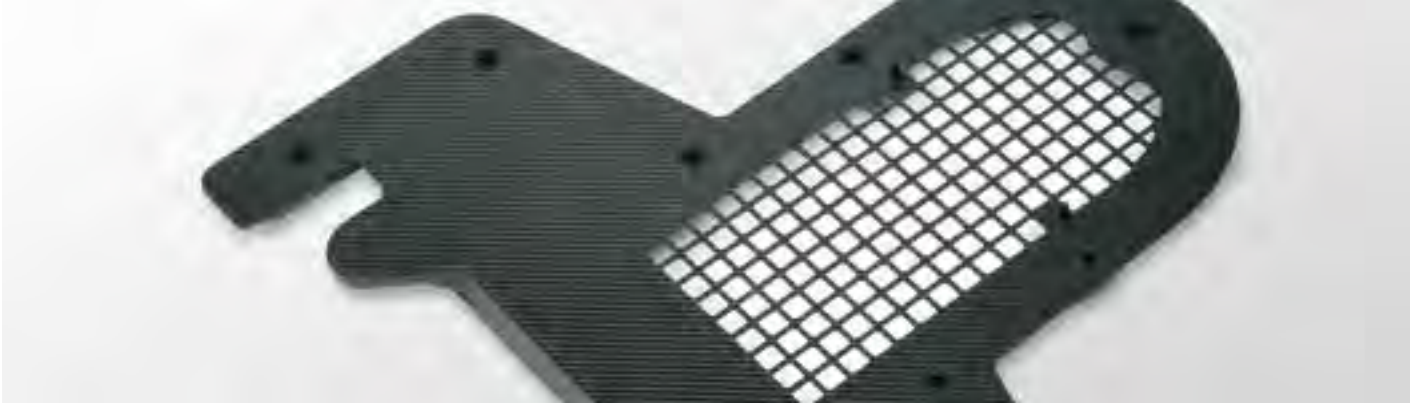
System HS PushPIN

The system HS PushPIN is designed for routine head and shoulder immobilization. Consisting of:

HS PushPIN Basic Module Carbon/MR (P10107-417/418)
 Pillow A, B, C, D, Y, Z PushPIN (P10107-244/245/246/247/250/251)
 Distance Plate PushPIN (P10107-252)
 HS Comfort Module (P10107-411)

ART.-NR.	P10107-713	System HS PushPIN Carbon
	P10107-714	System HS PushPIN MR

HS PushPIN & HS S-TYPE – Disposables



BlueFIX Head Mask PushPIN

BlueFIX mask material for head immobilization, including PushPIN Frame.

ART.-NR.	P10107-352	BlueFIX Head Mask PushPIN 2 mm Maxi
	P10107-353	BlueFIX Head Mask PushPIN 2 mm Micro
	P10107-354	BlueFIX Head Mask long PushPIN 2 mm Maxi
	P10107-355	BlueFIX Head Mask long PushPIN 2 mm Micro
	P10107-358	BlueFIX Head Mask PushPIN 2,4 mm Micro



BlueFIX Shoulder Mask PushPIN

BlueFIX Mask Material for head/shoulder immobilization, including PushPIN Frame.

ART.-NR.	P10107-356	BlueFIX Shoulder Mask PushPIN 2 mm Maxi
	P10107-357	BlueFIX Shoulder Mask PushPIN 2 mm Micro
	P10107-359	BlueFIX Shoulder Mask PushPIN 2,4 mm Micro



Head Rest PushPIN

Pillows for use with HS PushPIN Systems und Basic Modules.

ART.-NR.	P10107-244	Pillow Standard A PushPIN
	P10107-245	Pillow High B PushPIN
	P10107-246	Pillow Wedge C PushPIN
	P10107-247	Pillow Tilt D PushPIN
	P10107-248	Pillow Short Neck E PushPIN
	P10107-249	Pillow Small F PushPIN
	P10107-250	Pillow Prone Large Y PushPIN
	P10107-251	Pillow Prone Small Z PushPIN
	P10107-252	Distance Plate PushPIN
	P10107-254	Pillow Tilt Small G PushPIN



HS PushPIN & S-TYPE Basic Module without Components

Basic Module without Pillows and Distance Plate.

ART.-NR.	P10107-414	HS iBEAM evo Extension Basic Module PushPIN
	P10107-415	HS iBEAM evo Extension Basic Module S-TYPE
	P10107-416	HS iBEAM evo Extension Basic Module PushPIN long
	P10107-417	HS PushPIN Basic Module Carbon
	P10107-418	HS PushPIN Basic Module MR
	P10107-419	HS iBEAM evo Extension Basic Module S-TYPE long

Fraxion

When treating intracranial tumors it is crucial to keep the radiation exposure of critical neighbouring structures of the aimed target as low as possible. To guarantee a precise and narrowly defined dose application it is therefore vital to immobilize patients as comfortably and stable as possible. Only then are the necessary conditions provided to minimize the risks of movements during treatment.

The **Fraxion system** is one of the latest innovations of Elekta for head frames. With Fraxion, many immobilization options have been combined in one single system to respond to individual patient requirements. The precise performance assures a sharply defined dose release on the aimed target and consequently efficiently protects the neighbouring structures at risk.

What is Fraxion? A flexible head frame system enabling various intracranial treatment options. The unique design and integrated components provide easy application, significant patient comfort and unbeatable precision. The robust system eliminates the patient's mobility, thereby increasing reliability during imaging and therapy. Not only does Fraxion provide efficient performance of frame based stereotaxie but also enables a frameless use for combined IGRT applications.



Fraxion – Advantages

WHY

Fraxion

- + A complete head frame system for precise immobilization for SRT and SRS
- + A unique combination of vacuum mouthpiece and vacuum head cushion guarantees a simple, comfortable and accurate immobilization as well as re-positioning
- + A combination of individual mouthpieces and thermoplastic mask fixations establish additional options for optimized patient immobilization
- + Maximum reproducible positioning and orientation for sequential imaging and treatment
- + Built upon 60 years of clinical experience and success of Elekta in intracranial therapy

Fraxion – Systems



Fraxion Setup Cranial

The Fraxion Setup Cranial is used for the most precise head fixation and repositioning. It is especially designed for the requirements high precision radiation, including treatment of orbital and paranasal sinuses.

BESTEHEND AUS		
P10106-111	Fraxion Head Support Module ST	
P10106-101	Fraxion Frontpiece	
P10106-102	Fraxion Patient Control Unit	
P10106-104	Fraxion CT Adapter	
P10106-103	Fraxion Stereotactic Frame (Localizer/Target Positioner)	
P10106-200	Marking Sheets (5 units)	
P10106-123	Linac Tabletop Adapter iBeam evo (2 Degree of Freedom)	
P10106-212	Vacuum Cushion Plus L (1,8 L)	
P10106-213	Vacuum Cushion Plus M (1,4 L)	
P10106-214	Vacuum Cushion Plus S (10,8 L)	
P10106-320	Fraxion Mouthpiece Small (10 pcs)	
P10106-321	Fraxion Mouthpiece Medium (10 pcs)	
P10106-322	Fraxion Mouthpiece Large (10 pcs)	
P10106-310	Dental Impression Material	
P10106-311	Saliva Stop (20 pcs)	
P10106-312	DIM Adhesive	
P10106-313	Mixer and Dispenser	
P10106-400	Storage Box (5 pcs)	
P10106-105	Fraxion Torque Wrench	
P10106-300	Thermoplastic Mask Head (10 pcs)	
P10106-301	Thermoplastic Mask Nose (10 pcs)	
P10106-401	Isocenter Alignment Tool	
P10106-113	Fraxion Spacer	
P10106-115	Fraxion Protective Covers (2 pcs)	

Fraxion – Disposables



Fraxion Mouthpiece

The Fraxion Mouthpiece KIT includes different sizes of mouthpieces. The mouthpiece is fixed to the patient's maxilla with negative pressure.

ART.-NR.	P10106-320	Fraxion Mouthpiece Small (10 pcs)
	P10106-321	Fraxion Mouthpiece Medium (10 pcs)
	P10106-322	Fraxion Mouthpiece Large (10 pcs)



Fraxion Vacuum Cushion (2 Point Connection)

The Fraxion Vacuum Cushions are formed to the patients head and enable a better repositioning accuracy. Each cushion is molded individually. For Fraxion Frame (P10106-100).

ART.-NR.	P10106-210	Vacuum Cushion S
	P10106-211	Vacuum Cushion M



Fraxion Vacuum Cushion Plus (1 Point Connection)

The Fraxion Vacuum Cushions Plus are formed to the patients head and enable a better repositioning accuracy. Each cushion is molded individually. For Fraxion Head Support Modul ST/FX (P10106-111/110).

ART.-NR.	P10106-212	Vacuum Cushion Plus L (1,8 L)
	P10106-213	Vacuum Cushion Plus M (1,4 L)
	P10106-214	Vacuum Cushion Plus S (10,8 L)



Fraxion DIM Adhesive

The Fraxion DIM Adhesive cements the dental impression material to the mouthpiece.

ART.-NR.	P10106-312	DIM Adhesive
----------	------------	--------------

Patented mouthpiece immobilization



Systems with a bite-block as the central element never showed reliable repositioning accuracy, primarily caused by the difficulty to establish a stable and reproducible connection between the patient's upper palate and the preformed bite-block. Only now it is possible to immobilize a patient with the patented key technology of the Fraxion Mouthpiece, combining the complete palate dental impression and the connected vacuum. The Mouthpiece is fixated without the patient's active involvement. A fixed immobilization and accurate repositioning can be achieved by controlling the vacuum pressure.

Fraxion – Disposables



Fraxion Saliva Stop Tubes

The Fraxion Saliva Stop is a patient specific component that connects the mouthpiece to the Patient Control Unit. It prevents saliva from reaching the Patient Control Unit.

ART.-NR. P10106-311

Saliva Stop (20 pcs)



Fraxion Storage Box

The Fraxion Storage Boxes are available for all patient specific components: Vacuum cushion, Frontpiece with mouthpiece, Thermoplastic mask, Saliva Stop, marking sheets and protocols.

ART.-NR. P10106-400

Storage Box (5 pcs)



Fraxion Dental Impression Material (4 tubes)

The Fraxion Dental Impression Material contains four tubes of dental impression material for molding the mouthpiece impressions.

ART.-NR. P10106-310

Dental Impression Material



Fraxion Marking Sheets

The Fraxion Marking Sheets are used together with the Fraxion Stereotactic Frame to locate the treatment target in the coordinate system and position the patient.

ART.-NR. P10106-200

Marking Sheets (5 units)

Fraxion simple steps



Prepare the mouthpiece for the dental impression.

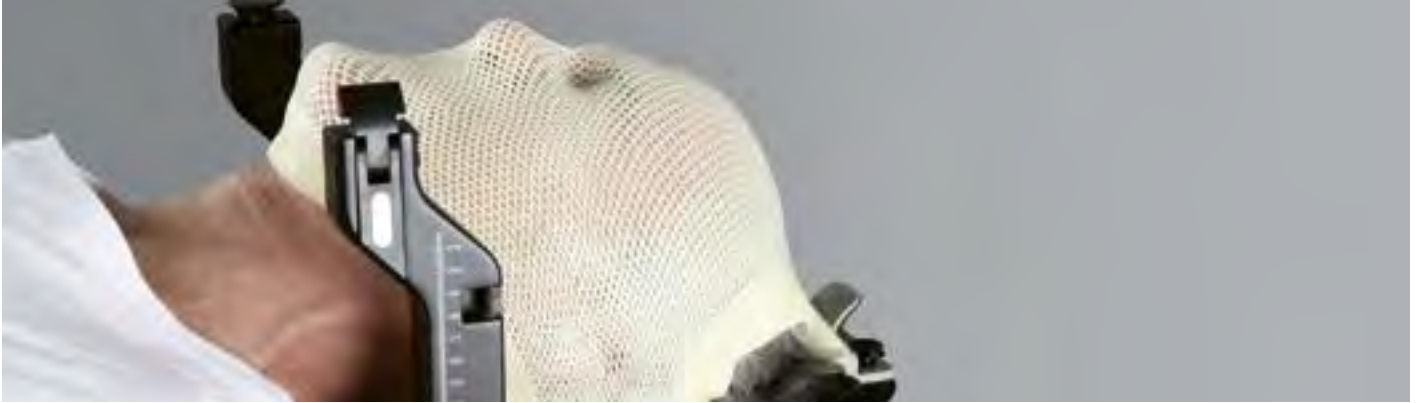


Fix the mouthpiece on the connecting plate and place the patient's head on the vacuum cushion.



Position the head and tighten the 3 screws on the connecting plate.

Fraxion – Disposables



Fraxion Screw Set for Connecting Plate

The Fraxion Screw Set contains 3 replacement screws for the Connecting Plate.

ART.-NR. 03-999-1070

Fraxion Frontpiece Screws



Fraxion Screw Set

The Fraxion Screw Set contains 6 replacement screws for the baseplate.

ART.-NR. 03-999-1069

Fraxion Screw Set



Fraxion Vacuum Pump Filter

Bacteria filter for the Fraxion Pump.

ART.-NR. 03-999-1081

Fraxion PCU Bacteria Filter



Mold the vacuum cushion around the patient's head.



Assemble the stereotactic frame.



Fix the stereotactic frame by using the clips.

Fraxion – Components



Fraxion Frame Stereotactic

The Fraxion frame is the main component of the system and provides the interface to the Linac. It consists of a U-shaped base and a thin head support for the vacuum cushion.

ART.-NR.	P10106-110	Fraxion Head Support Module FX
	P10106-111	Fraxion Head Support Module ST



Fraxion Connecting Plate

The Fraxion Connecting Plate is attached to the Fraxion Frame for the patient setup with the mouthpiece.

ART.-NR.	P10106-101	Fraxion Frontpiece
----------	------------	--------------------



Fraxion Vacuum Pump

The Fraxion Vacuum Pump provides the necessary vacuum for securing the mouthpiece to the patient's maxilla. Integrated patient alarm system.

ART.-NR.	P10106-102	Fraxion Patient Control Unit
----------	------------	------------------------------



Fraxion Stereotactic Frame

The Fraxion Stereotactic Frame is for target localization in stereotactic radiation therapy and radiosurgery.

ART.-NR.	P10106-103	Fraxion Stereotactic Frame
----------	------------	----------------------------



Fraxion CT Adapter

The Fraxion CT Adapter enables the fixation and use of the Fraxion Baseplate on indexed tables.

ART.-NR.	P10106-104	Fraxion CT Adapter
----------	------------	--------------------



Fraxion Torque Wrench

The Fraxion Torque Wrench is needed to tighten all screws with the appropriate torque of 2Nm.

ART.-NR.	P10106-105	Fraxion Torque Wrench
----------	------------	-----------------------



Fraxion Mask Material Double

The Fraxion mask material for head immobilization includes a single use frame and is compatible with Fraxion Frame (P10106-100) and Fraxion Head Support Module ST (P10106-111).

ART.-NR.	P10106-300	Thermoplastic Mask Head (10 pcs)
	P10106-301	Thermoplastic Mask Nose (10 pcs)



Fraxion Mask Material Single

The Fraxion mask material for head immobilization includes a single use frame and is compatible with Fraxion Head Support Module FX (P10106-110).

ART.-NR.	P10106-302	Thermoplastic Mask Head (10 pcs)
----------	------------	----------------------------------

Fraxion – Components



Fraxion Table Adapter with 2 Degrees of Freedom

The Adapter enables an adjustment of the isocenter with +/- 2° in the superior-inferior direction and +/- 1° in the right-left direction.

ART.-NR.	P10106-120	Linac Tabletop Adapter Varian (2 Degree of Freedom)
	P10106-121	Linac Tabletop Adapter Elekta CArm (2DoF)
	P10106-123	Linac Tabletop Adapter iBeam evo (2 Degree of Freedom)



Fraxion Table Adapter

The Fraxion Table Adapter enables a fixed attachment of the Fraxion frame to the Linac table.

ART.-NR.	P10106-130	Linac Tabletop Adapter Varian
	P10106-132	Linac Tabletop Adapter iBeam evo



Fraxion Mixer and Dispenser

The Fraxion mixer and dispenser enables easy filling of the mouthpiece with dental impression material.

ART.-NR.	P10106-313	Mixer and Dispenser
----------	------------	---------------------



Fraxion Spacer

The Fraxion Spacer is placed between the Head Support Module ST/FX and the Vacuum Cushion Plus. This interspace simplifies the usage of the thermoelastic masks.

ART.-NR.	P10106-113	Fraxion Spacer
----------	------------	----------------



Isocenter Alignment Tool

The Isocenter Alignment Tool is required for performing QA on the Fraxion Frame and Stereotactic Frame, for both imaging and treatment.

ART.-NR.	P10106-401	Isocenter Alignment Tool
----------	------------	--------------------------



Fraxion Protective Covers

For mask preparation, Fraxion Protective Covers are applied to the base of the Head Support Modul ST/FX.

ART.-NR.	P10106-115	Fraxion Protective Covers
----------	------------	---------------------------

BREAST AND THORAX

BodyFIX

WingSTEP

BreastSTEP

BT

Breast and Thorax



Keeping still is a tough job – better take assistance

BodyFIX

Motion is a major cause of artefacts and errors in modern imaging and high-precision therapy. **BodyFIX** enables accurate, precise patient positioning and immobilization, providing a foundation for successful imaging and treatment in radiation therapy.

The **patented BodyFIX dual vacuum technology** maximizes repositioning accuracy and intra-treatment patient stability by reducing both involuntary and voluntary patient movement. Manufactured entirely from radiotranslucent materials, BodyFIX provides artefact-free image clarity with minimal beam attenuation. The unique cover sheet nestles around the patient and produces a uniform pressure, securely immobilizing the patient's body parts.

The **BodyFIX BlueBAG vacuum cushions** enable comfortable and reproducible patient positioning from imaging through the entire treatment process. The BodyFIX BlueBAG creates a comfortable, stable and precise mold of the patient's position for up to six weeks. They can be used for different clinical set-ups and indications such as thorax, hip or total body.



BodyFIX – Advantages

WARUM

BodyFIX

- + Non-invasive and accurate reproducible patient positioning
- + Patented dual vacuum technology provides maximum intra-treatment patient stability
- + The unique cover sheet securely immobilizes the patient's body parts
- + Simple, flexible and comfortable immobilization solution
- + Integrated indexing
- + Modular construction, adaptable to most clinical environments from diagnostic imaging to treatment
- + Compatible with CT, MRI (used with fibreglass baseplate), PET/CT, SPECT and ultrasound imaging modalities as well as various tabletops
- + Reproducible and consistent results for high confidence in treatment
- + Intra- and inter- fractional motion reduction
- + Vendor neutral, able to index to any treatment couch

BodyFIX – Systems



BodyFIX Setup Stereotactic System with Localizer frame-based

Patented dual vacuum technology with non-invasive stereotactical reference frame and baseplate for extra-cranial stereotaxis.

BESTEHEND AUS	P10102-150	BodyFIX Vacuum Pump P3 230V
	P10102-122	BodyFIX Tube P3 length 5000mm
	P10104-821	BodyFIX 14 BlueBAG TOTAL BODY 700 x 2325 mm/65 L
	P10104-840	BodyFIX 14 BlueBAG TOTAL BODY 900 x 2325 mm/117 L
	P10102-200	BodyFIX Manifold Cushion 600mm
	P10102-202	BodyFIX Manifold Cushion 800mm
	P10102-216	BodyFIX Stabilizing Cushion 800x600mm
	P10102-212	BodyFIX Manifold Tube 1500mm
	P10102-213	BodyFIX Manifold Tube 2000mm
	P10102-304	BodyFIX Cover Sheet Total Body (5 pcs)
	P10102-305	BodyFIX Hygienic Drape Manifold Tube
	P10102-309	BodyFIX Hygienic Drape Manifold Cushion (2 x 15000 mm)
	P10104-005	BlueBAG Clamp (5 pcs)
	P10102-307	BodyFIX Adhesive Tape (3 pcs)
	P10102-112	BodyFIX 14 Base Plate Stereotactic STANDARD
	P10102-115	BodyFIX 14 Target Positioner STANDARD
	P10102-114	BodyFIX 14 CT Localizer STANDARD
	P10102-223	BodyFIX 14 Marking Set STANDARD
	P10102-409	BF Independent Indexing CT Couch Adapter (2 pcs)
	P10102-408	BF Independent Indexing Linac Couch Adapter (2 pcs)
P10105-110	Indexing Bar 14 (3 pcs)	

BodyFIX – Systems



BodyFIX Setup without stereotactic frame

Patented dual vacuum technology without stereotactic frame for extra-cranial stereotaxis.

BESTEHEND AUS	P10102-150	BodyFIX Vacuum Pump P3 230V
	P10102-122	BodyFIX Tube P3 5000mm
	P10104-821	BodyFIX 14 BlueBAG TOTAL BODY 700 x 2325 mm/65 L
	P10104-840	BodyFIX 14 BlueBAG TOTAL BODY 900 x 2325 mm/117 L
	P10102-200	BodyFIX Manifold Cushion 600mm
	P10102-202	BodyFIX Manifold Cushion 800mm
	P10102-216	BodyFIX Stabilizing Cushion 800x600mm
	P10102-212	BodyFIX Manifold Tube 1500mm
	P10102-213	BodyFIX Manifold Tube 2000mm
	P10102-304	BodyFIX Cover Sheet Total Body (5 pcs)
	P10102-305	BodyFIX Hygienic Drape Manifold Tube
	P10102-309	BodyFIX Hygienic Drape Manifold Cushion (2 x 15000 mm)
	P10104-005	BlueBAG Clamp incl. Sealing Pin (5 pcs)
	P10102-307	BodyFIX Adhesive Tape (3 pcs)
	03-999-1253	Tube Connector 4 mm to 4 mm (10 pcs)

BodyFIX – Systems



BodyFIX Setup with Diaphragm Control

Patented dual vacuum technology with abdominal press, without stereotactic frame for image guided extra-cranial stereotaxis. Respiration induced motion of tumors (such as liver and lung tumors) is still a clinical challenge in modern radiotherapy. Larger margins are required to account for respiratory motion and consequently a larger volume of healthy tissue is irradiated. To increase the accuracy and efficiency for these kind of treatments. The BodyFIX Diaphragm Control has been developed to specifically minimize diaphragm movements.

BESTEHEND AUS	P10102-150	BodyFIX Vacuum Pump P3 230V
	P10102-122	BodyFIX Tube P3 5000mm
	P10104-821	BodyFIX 14 BlueBAG TOTAL BODY 700 x 2325 mm/65 L
	P10104-840	BodyFIX 14 BlueBAG TOTAL BODY 900 x 2325 mm/117 L
	P10102-200	BodyFIX Manifold Cushion 600mm
	P10102-202	BodyFIX Manifold Cushion 800mm
	P10102-216	BodyFIX Stabilizing Cushion 800x600mm
	P10102-212	BodyFIX Manifold Tube 1500mm
	P10102-213	BodyFIX Manifold Tube 2000mm
	P10102-304	BodyFIX Cover Sheet Total Body (5 pcs)
	P10102-305	BodyFIX Hygienic Drape Manifold Tube 2x15000mm
	P10102-309	BodyFIX Hygienic Drape Manifold Cushion (2 x 15000 mm)
	P10104-005	BlueBAG Clamp (5 pcs)
	P10102-307	BodyFIX Adhesive Tape (3 pcs)
	P10102-119	BodyFIX Diaphragm Control
	P10107-743	System WingSTEP High
	P10107-452	WingSTEP Elevation Block ABS
	P10102-112	BodyFIX 14 Base Plate Stereotactic STANDARD
	P10105-110	Indexing Bar 14 (3 pcs)
	P10102-413	BodyFIX Indexing Adapter

BodyFIX – Systems




BodyFIX Setup for Breast and Thorax

Patented dual vacuum technology, especially for various treatment approaches for breast and lung tumors without stereotactic frame for image guided extra-cranial stereotaxis.

BESTEHEND AUS	P10102-150	BodyFIX Vacuum Pump P3 230V
	P10102-122	BodyFIX Tube P3 length 5000mm
	P10104-707	BodyFIX 14 BlueBAG Rectangular 700 x 2025 mm/60 L
	P10102-200	BodyFIX Manifold Cushion 600mm
	P10102-202	BodyFIX Manifold Cushion 800mm
	P10102-216	BodyFIX Stabilizing Cushion 800x600mm
	P10102-212	BodyFIX Manifold Tube 1500mm
	P10102-213	BodyFIX Manifold Tube 2000mm
	P10102-304	BodyFIX Cover Sheet Total Body (5 pcs)
	P10102-305	BodyFIX Hygienic Drape Manifold Tube
	P10102-309	BodyFIX Hygienic Drape Manifold Cushion (2 x 15000 mm)
	P10104-005	BlueBAG Clamp (5 pcs)
	P10102-307	BodyFIX Adhesive Tape (3 pcs)
	P10107-743	System WingSTEP High
	P10107-452	WingSTEP Elevation Block ABS


BodyFIX – Disposables



BodyFIX BlueBAG Rectangular

The BodyFIX vacuum cushion is used for precise and reproducible molds of the patient's contours. It can be indexed.

ART.-NR.	P10104-703	BlueBAG BodyFIX 14 Rectangular 700x1825mm/50L
	P10104-806	BlueBAG BodyFIX 14 Rectangular 700x1025mm/30L
	P10104-819	BlueBAG BodyFIX 14 Rectangular 700x1625mm/45L
	P10104-821	BlueBAG BodyFIX 14 Rectangular 700x2325mm/65L
	P10104-822	BlueBAG BodyFIX 14 Rectangular 750x1025mm/35L
	P10104-823	BlueBAG BodyFIX 14 Rectangular 700x1825mm/50L
	P10104-824	BlueBAG BodyFIX 14 Rectangular 700x1625mm/58L
	P10104-829	BlueBAG BodyFIX 14 Rectangular 950x1225mm/45L
	P10104-831	BlueBAG BodyFIX 14 Rectangular 850x1540mm/53L
	P10104-837	BlueBAG BodyFIX 14 Rectangular 850x1825mm/75L
	P10104-840	BlueBAG BodyFIX 14 Rectangular 900x2325mm/117L
	P10104-846	BlueBAG BodyFIX 14 Rectangular 700x2025mm/60L
	P10104-847	BlueBAG BodyFIX 14 Rectangular 850x2025mm/80L



BodyFIX BlueBAG T-Shape

The BodyFIX vacuum cushion is used for precise and reproducible molds of the upper body contours. It can be indexed


ART.-NR.	P10104-836	BlueBAG BodyFIX 14 T-Shape 1130 x 1375 mm/51 L
	P10104-839	BlueBAG BodyFIX 14 T-Shape 1280 x 1325 mm/60 L



BodyFIX BlueBAG with Knee Roll

The BodyFIX vacuum cushion is used for precise and reproducible molds of the patient's contours. It can be indexed and has an integrated knee roll.


ART.-NR.	P10104-843	BlueBAG BodyFIX 14 Rectangular/Knee Roll 850 x 1825 mm/62 L
----------	------------	---



BodyFIX BlueBAG Pentagon Shape

The BodyFIX vacuum cushion is used for precise and reproducible molds of the patient's contours. It can be indexed


ART.-NR.	P10104-820	BlueBAG BodyFIX 14 Pentagon-Shape 1050 x 1325 mm/45 L
	P10104-838	BlueBAG BodyFIX 14 Pentagon-Shape 1200 x 1325 mm/52 L



BlueBAG Clamp (5 pcs)

The BlueBAG Clamp locks the tube of the vacuum cushion. The enclosed gasket bolt locks the cushion permanently.


ART.-NR.	P10104-005	BlueBAG Clamp (5 pcs)
----------	------------	-----------------------



Sealing Pin

The Sealing Pin is used to close the tube of the vacuum cushion.

ART.-NR.	P10104-168	BlueBAG Sealing Pin (10 pcs)
----------	------------	------------------------------



Tube Connector

The Tube Connector connects the tube of the vacuum pump to the vacuum cushion.

ART.-NR.	03-999-1253	Tube Connector 4 mm to 4 mm (10 pcs)
----------	-------------	--------------------------------------

BodyFIX Repositioning Accuracy

Nevinny-Stickel M., Sweeney RA., Bale R., Posch A., Auberger T., Lukas P., Medical University Innsbruck,	Mean 3D repositioning error: 2.5 ± 1.1mm
Martin Fuss, M.D., Sean X. Cavanaugh, Bill J. Salter, Ph.D., Premavathy Rassiah, Dennis Cheek, Terence S. Herman, M.D., Dept. of Radiation Oncology, University of Texas Health Science Center at San Antonio	Mean computed absolute target translation: 2.9 ± 3.3, 2.3 ± 2.5, 3.2 ± 2.7mm in x, y and z directions
Meg Schneider, John Way, Robert Smee, Janet Williams, Prince of Wales Hospital, Department of Radiation Oncology, Sydney, Australia	Maximum deviation of setup accuracy: < 2mm

BodyFIX – Disposables



BodyFIX Cover Sheet TOTAL BODY (5 pcs)

The BodyFIX Cover Sheets is used for molding and immobilization of the patient using vacuum.

ART.-NR. P10102-304 BodyFIX Cover Sheet TOTA L BODY 2700 x 1400 mm



BodyFIX Hygienic Drape Manifold Tube (2x 15000mm)

The BodyFIX Hygienic Drape Manifold Tube is used to cover the vacuum manifold tube for hygienic purposes.

ART.-NR. P10102-305 BodyFIX Hygienic Drape Manifold Tube 2 x 15000 mm



BodyFIX Cover Sheet Thorax (5 pcs)

The BodyFIX Cover Sheet Thorax with sleeves includes five cover sheets. The cover sheets are placed over the patient to generate the vacuum.

ART.-NR. P10102-302 BodyFIX Cover Sheet THORAX 1800 x 1600 mm
P10102-303 BodyFIX Cover Sheet THORAX LONG 2700 x 1600 mm



BodyFIX Cover Sheet Hip (5 pcs)

The BodyFIX Cover Sheet Hip with sleeves includes five cover sheets. The cover sheets are placed over the patient to generate the vacuum.

ART.-NR. P10102-300 BodyFIX Cover Sheet HIP 2000 x 1400 mm
P10102-301 BodyFIX Cover Sheet HIP PLUS 2200 x 1400 mm



BodyFIX Adhesive Tape (3 pcs.)

The BodyFIX Adhesive Tape is used for fixing the cover sheets to the BodyFIX BlueBAGs.

ART.-NR. P10102-307 BodyFIX Adhesive Tape (3 pcs)



BodyFIX 14 Marking Set Standard

The BodyFIX 14 Marking Set Standard contains marking plates for BodyFIX Target Positioner to assist patient positioning and light field verification.

ART.-NR. P10102-223 BodyFIX 14 Marking Set Standard



BodyFIX Drape Manifold Cushion

Hygienic cover for the BodyFIX Manifold cushion.

ART.-NR. P10102-309 Hygienic Drape Manifold Cushion (2 x 15000 mm)



BodyFIX Manifold Connector Standard

Connector between Manifold Cushion and Manifold Tube.

ART.-NR. P10102-214 BodyFIX Manifold Connector Standard

BodyFIX BlueBAG with Knee Roll



The integrated yet easily moveable knee roll enables a very stable and at the same time comfortable molding of the patient's contours. The knee roll can be evacuated as well as the vacuum cushion and becomes rigid. It is filled with the same material as the cushion.

BodyFIX – Components



BodyFIX Vacuum Pump P3

The BodyFIX Vacuum Pump P3 is a high performance pump that controls the patented dual-vacuum technology, used for precise patient positioning and immobilization.

ART.-NR. P10102-150

BodyFIX P3 Vacuum Pump



BodyFIX Tube P3 (5 metres)

The BodyFIX Tube P3 connects the Vacuum Pump P3 with the Vacuum Manifold.

ART.-NR. P10102-122

BodyFIX Tube P3 (length 5 m)



BodyFIX 14 Target Positioner

The BodyFIX 14 Target Positioner enables the exact targeting of the tumor isocenter on the linac identified with the localizer on the CT.

ART.-NR. P10102-115

BodyFIX 14 Target Positioner



BodyFIX 14 CT Localizer

The BodyFIX 14 Localizer enables precise localization of the tumor isocenter. The x-, y- and z-isocenter coordinates can easily be determined with the rods of the localizer.

ART.-NR. P10102-114

BodyFIX 14 Localizer



BodyFIX 14 Baseplate Stereotactic Standard

Carbon fibre or glass fibre baseplate for the use of stereotactic frames on non-indexed tabletops.

ART.-NR. P10102-112

BodyFIX 14 Base Plate Stereotactic Standard



BodyFIX BlueBAG Tube P3

The BodyFIX BlueBAG Tube P3 connects the Vacuum Pump with the vacuum cushion.

ART.-NR. P10104-024

BlueBAG Tube P3



BodyFIX Diaphragm Control

The BodyFIX Diaphragm Control is used to immobilize the abdomen for image guided extra-cranial stereotaxis.

ART.-NR. P10102-119

BodyFIX Diaphragm Control



Diaphragm Control Adapter

Adapter for the use of the BodyFIX Diaphragm Control on non-indexed Varian and Siemens tabletops.

ART.-NR. P10107-469

Diaphragm Control Adapter for indexed tables

P10107-493

Diaphragm Control MR Adapter for indexed tables

BodyFIX Diaphragm Control workflow



Position the BodyFIX BlueBAG vacuum cushion on the imaging or treatment table by using the indexing bars (prerequisite is the BodyFIX 14 indexing system). Create the first vacuum so the patient does not sink in.

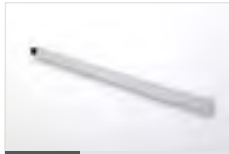


Position the patient on the BodyFIX BlueBAG cushion.



Position the manifold tube between the patient's legs to provide optimal distribution of the airflow. Then place the manifold cushion over patient's lower abdomen to guarantee optimal vacuum distribution.

BodyFIX – Components



BodyFIX Manifold Tube

Together with the Manifold Cushion the BodyFIX Manifold Tube establishes a permanent and equal vacuum over the patient.

ART.-NR.	P10102-210	BodyFIX Manifold Tube 1000 mm
	P10102-212	BodyFIX Manifold Tube 1500 mm
	P10102-213	BodyFIX Manifold Tube 2000 mm



BodyFIX Manifold Cushion

The BodyFIX Manifold cushion prevents the Cover Sheet from collapsing directly against the vacuum tube by distributing the airflow around the patient.

ART.-NR.	P10102-200	BodyFIX Manifold Cushion 600 mm
	P10102-201	BodyFIX Manifold Cushion 700 mm
	P10102-202	BodyFIX Manifold Cushion 800 mm
	P10102-203	BodyFIX Manifold Cushion 900 mm
	P10102-232	BodyFIX Manifold Cushion 400 mm
	P10102-233	BodyFIX Manifold Cushion 500 mm



BodyFIX Stabilizing Cushion

The BodyFIX Stabilizing Cushion provides improved stabilization of the patient when setting up the vacuum.

ART.-NR.	P10102-216	BodyFIX Stabilizing Cushion 800 x 600 mm
	P10102-217	BodyFIX Stabilizing Cushion OP-PORTAL



Grip Ring

The Grip Ring increases the patient's comfort and safety

ART.-NR.	P10107-410	Grip Ring (3 pcs)
----------	------------	-------------------



BodyFIX Independent Indexing Adapter

The BodyFIX Independent Indexing Adapter enables the attachment of the BodyFIX baseplate directly to non-indexed couches.

ART.-NR.	P10102-408	BodyFIX Independent Indexing LINAC Couch Adapter (2 pcs)
	P10102-409	BodyFIX Independent Indexing CT Couch Adapter (2 pcs)



BodyFIX Indexing Adapter

The BodyFIX Indexing Adapter is used for attaching the BodyFIX baseplate to indexed tabletops provided by other manufacturers.

ART.-NR.	P10102-413	BodyFIX Indexing Adapter
----------	------------	--------------------------



Indexing Bar Carbon

The Indexing Bar Carbon is used for indexed fitting and positioning of adequate accessories on indexed tabletops.

ART.-NR.	P10107-409	Indexing Bar 14 Carbon for Elekta (2 pcs)
	P10107-609	Indexing Bar 14 Carbon for Varian (2 pcs)
	P10107-610	Indexing Bar 14 Carbon for Pin Indexing (2 pcs)



Indexing Bar Standard

The Indexing Bar Standard is used for indexing and positioning of accessories on indexed tabletops.

ART.-NR.	P10105-110	Indexing Bar 14 Standard for Elekta (3 pcs)
	P10107-611	Indexing Bar 14 Standard for Varian
	P10107-612	Indexing Bar 14 Standard for Pin Indexing



Cover the patient with the cover sheet. Make sure the sheet is accurately attached with the adhesive tape. Switch on the BodyFIX Vacuum Pump connected to the manifold tube. Generate a vacuum to ensure that the BlueBAG nestles to the patient's body.



Position the arc of the diaphragm control and the appropriate plate over the cranial part of the abdomen (above the cover sheet), below the ribs.



When the cushion fits perfectly, activate the pump until a vacuum of appr. 650 mbar is reached. Close the white clamp and close off the BlueBAG tube with the black plug.

WingSTEP

The **WingSTEP** enables easy positioning, precise repositioning and high comfort for the patient during breast and thorax treatment. With its excellent robustness and quality, this patient friendly and non-invasive immobilization system is a novel device, designed to improve the accuracy of radiation therapy for supine techniques.

The new system allows comfortable positioning of the arms above the head and natural movement of the upper and lower arm. The head cushion is indexed, assuring a reproducible patient position throughout the total course of treatment. The **WingSTEP** is especially adapted to fit through all common CT gantries to achieve enhanced planning, simplification and expedition of the whole radiation therapy procedure and therefore increases time efficiency.

The **WingSTEP** can be used on all brands of couches available on the market for diagnostic and radiotherapy environment. In addition, even MRT or PET planning is possible since WingSTEP consists of high quality, metal-free materials.



WingSTEP – Advantages

WHY

WingSTEP

- + Easy and precise positioning
- + Reproducible, flexible arm and wrist support
- + Minimizes patient movements of arms and wrists
- + High comfort in breast and thorax positioning
- + Easy fit through CT aperture
- + Suitable CT, MRT and PET planning
- + High quality, metal-free material
- + Easy handling
- + Maximum stability and durability
- + Integrated indexing system
- + Compatible with all brands of couchtops

WingSTEP – Systems



System WingSTEP High

The WingSTEP High system is specially designed for routine breast and thorax positioning with big CT apertures (bore diameter > 70cm). Consisting of:

- WingSTEP high Baseplate (P10107-465)
- Pillow Standard A (P10107-240)
- Arm Support Ball Joint / Pin Joint (P10107-444 /441)
- Wrist Support Ball Joint (P10107-443)



ART.-NR.	P10107-741	System WingSTEP High – Pin Joint
	P10107-743	System WingSTEP High – Ball Joint
	P10107-745	System WingSTEP High for Varian – Ball Joint

System WingSTEP High Carbon

The WingSTEP High Carbon system is specially designed for routine breast and thorax positioning with big CT apertures (bore diameter > 70cm). Consisting of:

- WingSTEP Carbon high Baseplate (P10107-499)
- Pillow Standard A (P10107-240)
- Arm Support Ball Joint / Pin Joint (P10107-444 /441)
- Wrist Support Ball Joint (P10107-443)



ART.-NR.	ART.-NR. P10107-747	System WingSTEP Carbon High – Ball Joint
	ART.-NR. P10107-750	System WingSTEP Carbon High – Pin Joint

WingSTEP – Systems

System WingSTEP Low



The WingSTEP Low system is specially designed for routine breast and thorax positioning with small CT apertures (bore diameter < 70cm). Consisting of:

WingSTEP low Baseplate (P10107-464)
 Pillow Standard A (P10107-240)
 Arm Support Ball Joint / Pin Joint (P10107-444 /441)
 Wrist Support Ball Joint (P10107-443)

ART.-NR.	P10107-740	System WingSTEP Low – Pin Joint
	P10107-742	System WingSTEP Low – Ball Joint
	P10107-746	System WingSTEP Low for Varian – Ball Joint

System WingSTEP Low Carbon



The WingSTEP Low Carbon system is specially designed for routine breast and thorax positioning with small CT apertures (bore diameter < 70cm). Consisting of:

WingSTEP Carbon low Baseplate (P10107-498)
 Pillow Standard A (P10107-240)
 Arm Support Ball Joint / Pin Joint (P10107-444 /441)
 Wrist Support Ball Joint (P10107-443)

ART.-NR.	P10107-749	System WingSTEP Carbon Low – Ball Joint
	P10107-751	System WingSTEP Carbon Low – Pin Joint

System WingSTEP High MR



The WingSTEP High MR system is specially designed for routine breast and thorax positioning with big CT apertures (bore diameter > 70cm). The system is MR compatible. Consisting of:

WingSTEP MR high Baseplate (P10107-490)
 Pillow Standard A MR (P10107-255)
 Arm Support Ball Joint (P10107-444)
 Wrist Support Ball Joint (P10107-443)

ART.-NR.	ART.-NR. P10107-754	System WingSTEP MR High – Ball Joint
----------	---------------------	--------------------------------------

System WingSTEP Low MR



The WingSTEP Low MR system is specially designed for routine breast and thorax positioning with small CT apertures (bore diameter < 70cm). The system is MR compatible. Consisting of:

WingSTEP MR low Baseplate (P10107-466)
 Pillow Standard A MR (P10107-255)
 Arm Support Ball Joint (P10107-444)
 Wrist Support Ball Joint (P10107-443)

ART.-NR.	P10107-753	System WingSTEP MR Low – Ball Joint
----------	------------	-------------------------------------

WingSTEP – Components



Pillow A - Standard

Standard head support cushion for supine positioning with centering disc.

ART.-NR.	P10107-240	Pillow Standard A
	P10107-241	Pillow High B
	P10107-202	Pillow Wedge C
	P10107-218	Pillow Block H



WingSTEP MCT Wedge

10° wedge to raise WingSTEP, covered with artificial leather.

ART.-NR.	P10107-512	MCT Wedge 5°
	P10107-440	MCT Wedge 10°
	P10107-513	MCT Wedge 15°



Arm Support – Ball Joint

Flexible covered arm support – attached to a ball joint.

ART.-NR.	P10107-444	Arm Support – Ball Joint – Small (2 pcs)
	P10107-445	Arm Support – Ball Joint – Large (2 pcs)



Arm Support – Pin Joint

Flexible covered arm support – attached to a pin joint.

ART.-NR.	P10107-441	Arm Support – Pin Joint – Small (2 pcs)
	P10107-442	Arm Support – Pin Joint – Large (2 pcs)



Wrist Support – Ball Joint

Flexible covered wrist support – attached to a ball joint.

ART.-NR.	P10107-443	Wrist Support – Ball Joint (2 pcs)
----------	------------	------------------------------------



PU Cover for Arm Supports

Washable, leakproof PU Covers.

ART.-NR.	P10107-242	PU cover for Arm Support (2 pcs)
	P10107-243	PU cover for Wrist Support (2 pcs)



Wall Holder

Wall Holder to store the WingSTEP.

ART.-NR.	P10107-446	Wall holder for WingSTEP
----------	------------	--------------------------

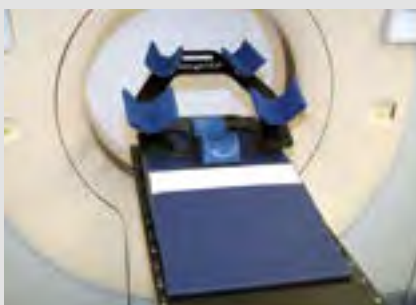


ProSTEP Pillow Fix

ProSTEP Pillow Fix for the use with STEP Systems.

ART.-NR.	P10107-232	ProSTEP Pillow Fix
----------	------------	--------------------

WingSTEP with MCT Wedge



Arm support types



Pin Joint



Ball Joint

WingSTEP – Components



WingSTEP MCT Wedge evo indexed

10° wedge to increase the height of the WingSTEP. Can be mounted on any indexed tabletop by use of Indexing bars.

ART.-NR. P10107-478

MCT Wedge evo Indexed



WingSTEP Arm Support Elevation Barrel

The WingSTEP Arm Support Elevation Barrel is used to increase the height of the arm shells on the WingSTEP system.

ART.-NR. P10107-488

WingSTEP Arm Support Elevation Barrel



WingSTEP Pole Bar

The adjustable WingSTEP pole bar allows the patient to hold on during the examination at the head end.

ART.-NR. P10107-487

WingSTEP Pole Bar



WingSTEP Elevation Block ABS

Elevation block with integrated indexing system to increase the height of the WingSTEP. Made of hard plastic.

ART.-NR. P10107-452

WingSTEP Elevation Block ABS



MCT Wedge Indexing Adapter

The MCT Wedge Indexing Adapter prevents slipping of the MCT Wedge 5°, 10° and 15° during treatment and allows the use of MCT Wedge Indexing Bars.

ART.-NR. P10107-474

MCT Wedge Indexing Adapter

P10107-475

MCT Wedge Indexing Bar for Elekta

P10107-476

MCT Wedge Indexing Bar for Varian

P10107-477

MCT Wedge Indexing Bar for Siemens



WingSTEP Baseplate

WingSTEP Baseplate with 4 ball joints, without arm supports and pillows.

ART.-NR. P10107-464

WingSTEP low - Baseplate with 4 ball joints

P10107-465

WingSTEP high - Baseplate with 4 ball joints

P10107-498

WingSTEP Carbon low - Baseplate with 4 ball joints

P10107-499

WingSTEP Carbon high - Baseplate with 4 ball joints

P10107-466

WingSTEP MR low - Baseplate with 4 ball joints

P10107-490

WingSTEP MR high - Baseplate with 4 ball joints

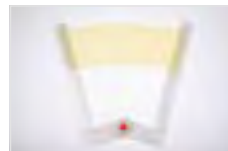


HeadSTEP upper plate for WingSTEP

The HeadSTEP upper plate for WingSTEP was designed for the routine immobilization of the head. It is an extension of the WingSTEP system.

ART.-NR. P10107-467

HeadSTEP Upper Plate for WingSTEP



iCAST Chin Double

iCAST mask material for head immobilization. To be used with the HeadSTEP Upper Plate for WingSTEP.

ART.-NR. P10107-334

iCAST Chin Double 4 mm

WingSTEP simple steps



Select the appropriate pillow for the patient and place it on the WingSTEP.



Before first use: Click upper and lower arm supports into the ball joints.



Set the WingSTEP system on the treatment table.



Position the patient's head on the head support. Place the patient's arms above the head onto the upper and lower arm supports.

BreastSTEP

The **BreastSTEP** enables easy positioning, precise repositioning and high comfort of the patient during breast and thorax treatment. With its excellent robustness and quality, this patient friendly and non-invasive immobilization system is a novel device, designed to improve the accuracy of radiation therapy for supine techniques. The new system allows comfortable positioning of the arms above the head and natural movement of the upper and lower arm.

The **BreastSTEP** consists of a baseplate and an upper plate made of a low density foam core, covered with thin layers of carbon fibre which allows the beam to pass through the BreastSTEP from any angle with minimal attenuation. Further components for the BreastSTEP are the indexed aperture for placing head supports, the bottom slide and the adjustable height arm and wrist support, which allows for very easy customization of patient positioning.

The **BreastSTEP** can be positioned at 4 different upper heights, 18 upper arm and 8 lower arm options, which comfortably positions and supports the arms above the head. The BreastSTEP can be used on all brands of couches available on the market, in diagnostic and radiotherapy environment.



BreastSTEP – Advantages

WHY

BreastSTEP

- + Easy positioning and precise repositioning
- + Reproducible, flexible arm and wrist support
- + Minimizes patient movements of arms and wrists
- + High comfort in breast and thorax positioning
- + Easy handling and high quality
- + Maximum stability and durability
- + Integrated indexing system
- + 4 different upper plate heights in 5° steps
- + Arm support height adjustment with 3 numbered positions
- + Arm support rotatable in 6 numbered positions (15° steps)
- + Wrist support height adjustment with 2 different positions
- + Wrist support with 4 numbered positions in 30° steps
- + Compatible with all brands of couchtops

BreastSTEP – Systems



System BreastSTEP Indexed Short

The BreastSTEP system is designed for routine breast and thorax positioning. It allows 4 different upper heights, 18 arm and 8 wrist support options. It can be reproducibly attached to tabletops with integrated indexing systems by using standard indexing bars. Consisting of:



- BreastSTEP Basic Module Short (P10107-436)
- Pillow A (P10107-240)
- Slide Stop (P10107-420)
- 2 x BreastSTEP Arm Support (P10107-479)
- 2 x BreastSTEP Wrist Support (P10107-480)

ART.-NR. P10107-720

System BreastSTEP Indexed Short

P10107-726

System BreastSTEP Indexed Short Mask

System BreastSTEP Conventional Indexed Long

The BreastSTEP system is designed for routine breast and thorax positioning. It allows 4 different upper heights, 18 arm and 8 wrist support options. The BreastSTEP Conventional can be used on tabletops with integrated indexing systems as well as on non-indexable couches. Consisting of:



- BreastSTEP Basic Module Long (P10107-437)
- Pillow A (P10107-240)
- Slide Stop (P10107-420)
- 2 x BreastSTEP Arm Support (P10107-479)
- 2 x BreastSTEP Wrist Support (P10107-480)

ART.-NR. P10107-721

System BreastSTEP Conventional Indexed Long

P10107-727

System BreastSTEP Conventional Indexed Long Mask

BreastSTEP – Systems



System BreastSTEP Prone

The BreastSTEP Prone system is designed for routine breast treatment in a prone position. It is attached to tabletops with a reproducible integrated indexing system by using standard indexing bars. Consisting of:



- BreastSTEP Prone Upper Plate Carbon (P10107-506)
- BreastSTEP Prone Baseplate Indexed (P10107-507)
- BreastSTEP Prone Foam Plate (P10107-508)
- BreastSTEP Prone Hand Pole Bar (P10107-509)
- BreastSTEP Prone Position Pillow (P10107-510)
- BreastSTEP Prone Comfort Module (P10107-515)

ART.-NR. P10107-724

System BreastSTEP Prone

P10107-725

System BreastSTEP Prone US

System BreastSTEP Indexed Short & Long MR

The BreastSTEP Indexed short & long MR systems are designed for routine breast and thorax positioning. They allow 4 different upper heights, 18 arm and 8 wrist support options. They are attached to tabletops with a reproducible integrated indexing system by using standard indexing bars. They are equipped with a slide stop which is independently indexed to the tabletop. MR compatible. Consisting of:



- BreastSTEP Basic Module Short & Long MR
- Pillow Standard A MR (P10107-255)
- Slide Stop PC MR (P10107-518)
- 2 x BreastSTEP Arm Support MR
- 2 x BreastSTEP Wrist Support MR

ART.-NR. P10107-722

System BreastSTEP Indexed Short MR

P10107-723

System BreastSTEP Conventional Indexed Long MR

BreastSTEP – Components



Pillow

Head support cushion for supine positioning with centering disc.

ART.-NR.	P10107-240	Pillow Standard A
	P10107-241	Pillow High B
	P10107-202	Pillow Wedge C
	P10107-218	Pillow Block H



Pillow Round

Head support cushion for lateral positioning with centering disc.

ART.-NR.	P10107-453	Pillow Round
----------	------------	--------------



Pillow Adapter

The Pillow Adapter enables moving the head rest to the right/left side or cranial/caudal.

ART.-NR.	P10107-421	Pillow Adapter for Left – Right
	P10107-422	Pillow Adapter for Cranio – Caudal



PU Cover for Arm Support (2 pcs.)

The covers are made of washable, leakproof PU.

ART.-NR.	P10107-220	PU Cover for Arm Support (2 pcs)
	P10107-221	PU Cover for Wrist Support (2 pcs)



Slide Stop

The Slide Stop prevents the patient sliding from the BreastSTEP.

ART.-NR.	P10107-420	Slide Stop
	P10107-518	Slide Stop PC MR



Wall Holder

Wall Holder to store the BreastSTEP.

ART.-NR.	P10107-497	Wall holder for BreastSTEP
----------	------------	----------------------------



HeadSTEP Upper Plate for BreastSTEP

The HeadSTEP upper plate for BreastSTEP was designed for the routine immobilization of the head. It is an extension of the BreastSTEP system.

ART.-NR.	P10107-468	HeadSTEP Upper Plate for BreastSTEP
----------	------------	-------------------------------------



BreastSTEP Hand Pole Bar

The BreastSTEP Hand Pole Bar can be gripped by the patient during treatment, offering an extra feeling of security and preventing the patient from slipping when treated in a high angled position.

ART.-NR.	P10107-482	BreastSTEP Hand Pole Bar
----------	------------	--------------------------

BreastSTEP simple steps



Set the BreastSTEP on the tabletop.



Select the appropriate position of the upper body from four different possibilities using the height adjustment system.



BreastSTEP Single Parts Components of the BreastSTEP systems.

BreastSTEP – Components



BreastSTEP Single Parts

Components of the BreastSTEP systems.

ART.-NR.	P10107-423	BreastSTEP Upper Plate Carbon
	P10107-424	BreastSTEP Base Plate Indexed Short
	P10107-425	BreastSTEP Base Plate Indexed Long
	P10107-426	BreastSTEP Height Adjustment
	P10107-435	BreastSTEP Height Adjustment High
	P10107-436	BreastSTEP Basic Module Short
	P10107-437	BreastSTEP Basic Module Long
	P10107-479	BreastSTEP Arm Support (1 pc)
	P10107-480	BreastSTEP Wrist Support (1 pc.



BreastSTEP Prone Components

Components of the BreastSTEP Prone systems.

ART.-NR.	P10107-506	BreastSTEP Prone Upper Plate Carbon
	P10107-507	BreastSTEP Prone Base Plate Indexed
	P10107-508	BreastSTEP Prone Foam Plate
	P10107-509	BreastSTEP Prone Hand Pole Bar
	P10107-510	BreastSTEP Prone Position Pillow
	P10107-515	BreastSTEP Prone Comfort Module



BreastSTEP Comfort Module

The Comfort Module serves for more comfortable positioning of the upper body with BreastSTEP Indexed Short and Long Systems.

ART.-NR.	P10107-489	BreastSTEP Comfort Module Short
	P10107-492	BreastSTEP Comfort Module Long



Indexing Bar Off-Centered

Indexing Bar 100mm off centered is used for indexed fitting and positioning of accessories on indexed Varian and Elekta tabletops with off-centered indexing points.

ART.-NR.	P10107-631	Indexing Bar 100 mm Off-centered for Elekta
	P10107-630	Indexing Bar 100 mm Off-centered for Varian
	P10107-666	Indexing Bar 100 mm Off-centered Carbon for Elekta
	P10107-665	Indexing Bar 100 mm Off-centered Carbon for Varian



BreastSTEP Mask

BreastSTEP mask material for System BreastSTEP Indexed Short Mask und Indexed Long Mask.

ART.-NR.	P10107-483	BreastSTEP Mask 3,2
----------	------------	---------------------



Mirror Mount

Mirror Mount for application of DIBH techniques.

ART.-NR.	P10107-222	Mirror Mount for BreastSTEP
----------	------------	-----------------------------



Select the appropriate position of the upper arms with different heights and angles of the arm support systems.



Adjust the wrist support systems to the appropriate position.



Position the patient's head on the head support and place the patient's arm above the head into the arm and wrist support.

HIP AND PELVIC

BellySTEP

ProSTEP

HP

Hip and Pelvic



Keeping still is a tough job – better take assistance

BellySTEP

The **BellySTEP** foam based positioning system provides one of the most comfortable devices available on the market. The three different sized belly inserts guarantee customized bowel displacement. This allows high precision repositioning in routine pelvic and belly positioning.

The **BellySTEP** is designed to reduce the irradiation of the small bowel volume of patients and to facilitate a proper and comfortable prone position during pelvic area treatment. The BellySTEP consists of a foam based baseplate covered with artificial leather, interchangeable belly inserts and the BellySTEP prone position pillow. All BellySTEP parts are made of polyethylene foam, which offers patients high comfort without compromising the stability.

The **BellySTEP** allows patient friendly, non-invasive positioning whenever accurate and reproducible patient positioning is essential for optimized therapy schedules. In addition, even MRI or PET planning is possible since the BellySTEP consists of high quality, metal-free and non-conductive materials. It simplifies and expedites the radiation therapy procedure to increase time efficiency.



BellySTEP – Advantages

WHY

BellySTEP

- + Easy positioning and precise repositioning
- + Three different inserts
- + Prone position pillow
- + Minimizes patient movements
- + High comfort in belly and pelvic positioning
- + Foam based bellyboard
- + Maximum stability and durability
- + Suitable for CT, MRT and PET planning
- + High quality, metal-free material
- + Artificial leather protection

BellySTEP – Systems



System BellySTEP

The BellySTEP system is designed for the positioning of the hip region for precise radiation in a comfortable prone position, therefore minimizing the radiation exposure of the small intestine as much as possible. Consisting of:



- BellySTEP Baseplate (P10107-160)
- BellySTEP Insert A – Medium (P10107-161)
- BellySTEP Insert B – Large (P10107-162)
- BellySTEP Insert C – Small (P10107-163)
- BellySTEP Prone Position Pillow (P10107-164)

ART.-NR. P10107-760

System BellySTEP

BellySTEP with BellySTEP prone position pillow



Set the BellySTEP on the table to

BellySTEP – Components



BellySTEP Baseplate

The BellySTEP Baseplate is made of polyethylene foam and covered with artificial leather for easy disinfection.

ART.-NR.	P10107-160	BellySTEP Base Plate
	P10107-168	BellySTEP Base Plate cut out long
	P10107-169	BellySTEP Base Plate no cut out



BellySTEP Insert A – Medium

The BellySTEP Insert A is a polyethylene, leakproof cushion for the BellySTEP baseplate. Made for patients with a normal belly. Double skinfoam coated.

ART.-NR.	P10107-161	BellySTEP Insert A – Medium
----------	------------	-----------------------------



BellySTEP Insert B – Large

The BellySTEP Insert B is a polyethylene, leakproof cushion for the BellySTEP baseplate. Made for patients with a big belly. Double skinfoam coated.

ART.-NR.	P10107-162	BellySTEP Insert B – Large
----------	------------	----------------------------



BellySTEP Insert C – Small

The BellySTEP Insert C is a polyethylene, leakproof cushion for the BellySTEP baseplate. Made for patients with a small belly. Double skinfoam coated.

ART.-NR.	P10107-163	BellySTEP Insert C – Small
----------	------------	----------------------------



BellySTEP Prone Position Pillow

The BellySTEP Prone Position Pillow releases pressure in the breast area by supporting the shoulders and therefore a higher position stability.

ART.-NR.	P10107-164	BellySTEP Prone Position Pillow
----------	------------	---------------------------------



BellySTEP Prone Position Pillow Cover

Removeable and washable cover for the Prone Pillow.

ART.-NR.	P10107-167	BellySTEP Prone Position Pillow Cover
----------	------------	---------------------------------------



BellySTEP Indexing Adapter

The BellySTEP Indexing Adapter and Indexing Bars are used for attaching the BellySTEP baseplate to indexed couchtops from Elekta, Siemens and Varian.

ART.-NR.	P10107-165	BellySTEP Indexing Adapter
	P10107-484	BellySTEP Indexing Bar for Elekta
	P10107-485	BellySTEP Indexing Bar for Varian
	P10107-486	BellySTEP Indexing Bar for Pin Indexing

BellySTEP simple steps



Select the appropriate belly insert and snap it into the baseplate.



Position the patient onto the BellySTEP, starting cranially and sliding into the caudal direction. The pubic bone must be positioned in the caudal aperture for an optimal reduction of the small bowel volume.



Position the patient's head on the prone position head support. Place the crossed arms of the patient over the BellySTEP Prone Position Pillow.

ProSTEP

The **ProSTEP** is designed to improve the accuracy of positioning and re-positioning for the lower abdomen and extremities. This system combines the advantages and the functionality of the FeetSTEP and the KneeSTEP which are available in both ABS and carbon fibre quality. By using both cushions together with the **ProSTEP** baseplate, performance is enhanced, especially when treating the pelvic area.

On the lower end of the baseplate, the KneeSTEP can be adjusted and eventually combined with KneeSTEP elevation block to acquire the optimal height and comfort. The mounted sliding bed for the FeetSTEP allows 17 different longitudinal (1.5 cm steps) and 10 different indexed angular adjustment positions (5° steps).

Because of the indexed positioning of the lower extremities, the **ProSTEP** guarantees high precision repositioning in the pelvic area, thus simplifying and increasing efficiency of the radiation therapy. **The ProSTEP** baseplate is compatible with standard indexing bars and can be used on all brands of couches available on the market for diagnostic and radiotherapy settings.



ProSTEP – Advantages

WHY

ProSTEP

- + Easy positioning and precise repositioning
- + KneeSTEP in combination with elevation block
- + Mounted sliding bed adjusted with FeetSTEP
- + 17 different indexed longitudinal adjustment positions (1.5 cm steps)
- + 10 different indexed angular adjustment positions (in 5° steps)
- + High comfort in pelvic position
- + Comfortable patient positioning
- + Easy handling and high quality
- + Integrated indexing system
- + Compatibel with all tabletops

ProSTEP – Systems



System ProSTEP ABS

The ProSTEP ABS system is designed for positioning of the lower abdomen and extremities. Offering 17 longitudinal and 10 angular positions with integrated indexing system. Consisting of:

- ProSTEP Baseplate (P10107-427)
- Sliding bed for the ProSTEP (P10107-580)
- KneeSTEP ABS (P10107-180 /187)
- KneeSTEP Elevation Block (P10107-184)

ART.-NR. P10107-780

System ProSTEP ABS

P10107-782

System ProSTEP ABS low



System ProSTEP Carbon

The ProSTEP Carbon system is designed for the positioning the lower abdomen and extremities. Offering 17 longitudinal and 10 angular positions with integrated indexing system. Consisting of:

- ProSTEP Baseplate (P10107-427)
- Sliding bed for the ProSTEP (P10107-581)
- KneeSTEP Carbon (P10107-181)
- KneeSTEP Elevation Block (P10107-184)

ART.-NR. P10107-781

System ProSTEP Carbon



System ProSTEP Short

The ProSTEP Short system is designed for the positioning the lower abdomen and extremities. Offering 17 longitudinal and 10 angular positions with an integrated indexing system. Consisting of:

- ProSTEP Baseplate Short (P10107-438)
- Sliding bed for the ProSTEP (P10107-580 /581)
- KneeSTEP ABS (P10107-180 /181)
- KneeSTEP Elevation Block (P10107-184)

ART.-NR. P10107-788

System ProSTEP Short ABS

P10107-796

System ProSTEP Short Carbon

ProSTEP simple steps



Set the ProSTEP system on the tabletop.



Choose the appropriate position of the legs with the sliding bed system of the FeetSTEP.

ProSTEP – Systems

System ProSTEP PC MR



The ProSTEP PC MR system is designed for the positioning the lower abdomen and extremities. Offering 17 longitudinal and 10 angular positions with an integrated indexing system. The system is MR compatible. Consisting of:

- ProSTEP Baseplate (P10107-427)
- Sliding bed for the ProSTEP (P10107-237)
- KneeSTEP PC MR (P10107-235/236)
- KneeSTEP Elevation Block PC MR (P10107-238)

ART.-NR. P10107-783

System ProSTEP PC MR

P10107-794

System ProSTEP PC MR low

System ProSTEP PC MR Short



The ProSTEP PC MR Short system is designed for the positioning the lower abdomen and extremities. Offering 17 longitudinal and 10 angular positions with an integrated indexing system. The system is MR compatible. Consisting of:

- ProSTEP Baseplate (P10107-438)
- Sliding bed for the ProSTEP (P10107-237)
- KneeSTEP PC MR (P10107-235/236)
- KneeSTEP Elevation Block PC MR (P10107-238)

ART.-NR. P10107-797

System ProSTEP Short PC MR

P10107-799

System ProSTEP Short PC MR low

System ProSTEP Brachy



The BrachySTEP is designed for CT planned treatment in lithotomy position

ART.-NR. P10107-785

System ProSTEP Brachy



Select the appropriate position of the KneeSTEP. If necessary, use the elevation block for height adjustment.



Select appropriate position of the feet with the sliding bed system of the FeetSTEP.



Position the patient onto the ProSTEP.

ProSTEP – Components



KneeSTEP

Knee support cushion, for quick, easy and accurate knee positioning. Handles on both sides, with 5 integrated indexing positions. Available in carbon fibre or hard plastic.

ART.-NR.	P10107-180	KneeSTEP ABS
	P10107-181	KneeSTEP Carbon
	P10107-187	KneeSTEP low ABS



FeetSTEP

Feet support for easy and accurate feet positioning. Flexible handles on both sides, two integrated indexing positions. Available in carbon fibre or hard plastic.

ART.-NR.	P10107-182	FeetSTEP ABS
	P10107-183	FeetSTEP Carbon



KneeSTEP Elevation Block ABS

Distance cushion for the elevation of the KneeSTEP in hard plastic, with integrated indexing system.

ART.-NR.	P10107-184	KneeSTEP Elevation Block ABS
----------	------------	------------------------------



Shoulder Retractor

2 straps with hand grips can be attached in 7 different colour coded positions on the ProSTEP systems.

ART.-NR.	P10107-185	Shoulder Retractor
----------	------------	--------------------



HipSTEP

The HipSTEP is designed to cover the entire abdomen and pelvis with one sheet of thermoplastic.

ART.-NR.	P10107-186	HipSTEP
	P10107-197	HipSTEP MR



HipSTEP Mask

3.2 mm mask material for HipSTEP including disposable frame.

ART.-NR.	P10107-380	HipSTEP Mask Maxi 3,2 mm
	P10107-381	HipSTEP Mask Micro 2,4 mm



KneeSTEP PC MR

Knee support cushion, for quick, easy and accurate knee positioning. Handles on both sides, with 5 integrated indexing positions. Manufactured of MR compatible polycarbonate.

ART.-NR.	P10107-235	KneeSTEP PC MR
	P10107-236	KneeSTEP PC MR Low



KneeSTEP Elevation Block PC MR

Distance cushion for the elevation of the KneeSTEP with integrated indexing system. Made of MR compatible polycarbonate.

ART.-NR.	P10107-238	KneeSTEP Elevation Block PC MR
----------	------------	--------------------------------



FeetSTEP PC MR

Feet support for easy and accurate feet positioning. Flexible handles on both sides, two integrated indexing positions. Manufactured of MR compatible polycarbonate.

ART.-NR.	P10107-237	FeetSTEP PC MR
----------	------------	----------------



Wall Holder

Wall Holder to store the ProSTEP.

ART.-NR.	P10107-496	Wall holder for ProSTEP
----------	------------	-------------------------

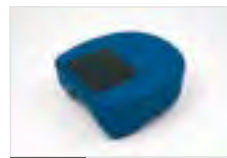
ProSTEP – Components



ProSTEP Pillow Fix

Head support which either can be used alone or mounted on the tabletop using the indexing adapter.

ART.-NR. P10107-232 ProSTEP Pillow Fix



ProSTEP Pillow Slide

Head support which either can be used alone or mounted on a tabletop using an indexing adapter. Due to the smaller baseplate it can be moved in cranial/caudal direction.

ART.-NR. P10107-233 ProSTEP Pillow Slide



ProSTEP Pillow Indexing Adapter

The ProSTEP Pillow Indexing Adapter allows the fixation of ProSTEP pillows on tabletops via Standard Indexing Bars.

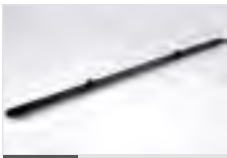
ART.-NR. P10107-234 ProSTEP Pillow Indexing Adapter



ProSTEP Baseplate

Baseplate for ProSTEP Systems.

ART.-NR. P10107-427 ProSTEP Base Plate
P10107-438 ProSTEP Base Plate Short



Indexing Bar Carbon

The Indexing Bar Carbon is used for indexed fitting and positioning of adequate accessories on indexed tabletops.

ART.-NR. P10107-409 Indexing Bar 14 Carbon for Elekta (2 pcs)
P10107-609 Indexing Bar 14 Carbon for Varian (2 pcs)
P10107-610 Indexing Bar 14 Carbon for Pin Indexing (2 pcs)



ProSTEP Sliding Bed

The ProSTEP sliding bed is a component of the ProSTEP system. Available with or without FeetSTEP ABS/carbon.

ART.-NR. P10107-428 ProSTEP Sliding Bed (No FeetSTEP)
P10107-580 Sliding Bed for the ProSTEP (incl. FS ABS)
P10107-581 Sliding Bed for the ProSTEP (incl. FS Carbon)

MR STEP

MR STEP

HeadSTEP MR

BreastSTEP MR

WingSTEP MR

ProSTEP PC MR

MMS

MR STEP



Keeping still is a tough job – better take assistance

MR STEP

For use in MR or MR-Linac, we have developed a range of immobilization aids that guarantee safe, precise and reproducible positioning during MRI as well as during radiotherapy. The series includes the systems **HeadSTEP MR, WingSTEP MR, BreastSTEP MR** and **ProSTEP MR** and facilitates the immobilization of the head and thorax region and the extremities. They can be attached to the patient table and precisely repositioned using our indexing bars.

WHY

MR STEP

- + Suitable for CT, MRI and MR-Linac
- + Modules for head, thorax and extremity positioning available
- + Ensures simple, precise and reproducible positioning
- + Guaranties highest stability and durability
- + Compatible to most patient tables
- + Features our proven indexing system

MR STEP – Systems

System HeadSTEP Shoulder MR



The HeadSTEP Shoulder MR system is designed for routine head and shoulder immobilization. Includes height adjustment with 23 positions. The system is MR compatible. Consisting of:

HeadSTEP Shoulder Basic Module MR (P10107-429)
Pillow A, B, D, Y, Z MR (P10107-255/256/257/261/262)
HeadSTEP Shoulder Adapter Extension (P10107-407)
HeadSTEP Shoulder Comfort Module (P10107-411)

ART.-NR. P10107-711

System HeadSTEP Shoulder MR

System HeadSTEP MR



The HeadSTEP Shoulder MR system is designed for routine head and shoulder immobilization. Includes height adjustment with 23 angles. The system is MR compatible. Consisting of:

HeadSTEP MR Basic Module (P10107-400)
Pillow A, B, D, Y, Z MR (P10107-255/256/257/261/262)
Indexing Adapter (P10107-406)

ART.-NR. P10107-704

System HeadSTEP MR

System HeadSTEP IMRT MR



The HeadSTEP IMRT MR is designed for routine head and shoulder immobilization at a normal couchtop and extends the end of the couchtop. Includes height adjustment with 23 angles. The system is MR compatible. Consisting of:

HeadSTEP IMRT Basic Module MR
Pillow A, B, D, Y, Z MR (P10107-255/256/257/261/262)
HeadSTEP Shoulder Adapter Extension (P10107-407)

ART.-NR. P10107-715

System HeadSTEP IMRT MR

System BreastSTEP Indexed Short & Long MR



The BreastSTEP system Indexed Short & Long MR is designed for routine breast and thorax positioning. The system is MR compatible. Consisting of:

BreastSTEP Basic Module Short & Long MR
Pillow Standard A MR (P10107-255)
Slide Stop PC MR (P10107-518)
2 x BreastSTEP Arm Support MR
2 x BreastSTEP Wrist Support MR

ART.-NR. P10107-722

System BreastSTEP Indexed Short MR

P10107-723

System BreastSTEP Conventional Indexed Long MR

MR STEP – Systems

System WingSTEP High MR



The WingSTEP High MR system is specially designed for routine breast and thorax positioning with big CT apertures (bore diameter > 70cm). The system is MR compatible. Consisting of:

- WingSTEP MR high Baseplate (P10107-490)
- Pillow Standard A MR (P10107-255)
- Arm Support Ball Joint (P10107-444)
- Wrist Support Ball Joint (P10107-443)

ART.-NR. ART.-NR. P10107-754

System WingSTEP MR High – Ball Joint

System WingSTEP Low MR



The WingSTEP Low MR system is specially designed for routine breast and thorax positioning with small CT apertures (bore diameter < 70cm). The system is MR compatible. Consisting of:

- WingSTEP MR low Baseplate (P10107-466)
- Pillow Standard A MR (P10107-255)
- Arm Support Ball Joint (P10107-444)
- Wrist Support Ball Joint (P10107-443)

ART.-NR. P10107-753

System WingSTEP MR Low – Ball Joint

System ProSTEP PC MR



The ProSTEP PC MR system is designed for the positioning the lower abdomen and extremities. Offering 17 longitudinal and 10 angular positions with integrated indexing system. The system is MR compatible. Consisting of:

- ProSTEP Baseplate (P10107-427)
- Sliding bed for the ProSTEP (P10107-237)
- KneeSTEP PC MR (P10107-235/236)
- KneeSTEP Elevation Block PC MR (P10107-238)

ART.-NR. P10107-783

System ProSTEP PC MR

P10107-794

System ProSTEP PC MR low

System ProSTEP PC MR Short



The ProSTEP PC MR system is designed for the positioning the lower abdomen and extremities. Offering 17 longitudinal and 10 angular positions with integrated indexing system. The system is MR compatible. Consisting of:

- ProSTEP Baseplate (P10107-438)
- Sliding bed for the ProSTEP (P10107-237)
- KneeSTEP PC MR (P10107-235/236)
- KneeSTEP Elevation Block PC MR (P10107-238)

ART.-NR. P10107-797

System ProSTEP Short PC MR

P10107-799

System ProSTEP Short PC MR low

MR STEP – Components



KneeSTEP PC MR

Knee support cushion, for quick, easy and accurate knee positioning. Handles on both sides, with 5 integrated indexing positions. Made of MR compatible polycarbonate.

ART.-NR.	P10107-235	KneeSTEP PC MR
	P10107-236	KneeSTEP PC MR Low



Pillows MR

Pillows for the MR STEP Systems und Basic Modules.

ART.-NR.	P10107-255	Pillow Standard A - MR
	P10107-256	Pillow High B - MR
	P10107-257	Pillow Tilt D - MR
	P10107-258	Pillow Short Neck E - MR
	P10107-259	Pillow Small F - MR
	P10107-260	Pillow Tilt Small G - MR
	P10107-261	Pillow Prone Large Y - MR
	P10107-262	Pillow Prone Small Z - MR



FeetSTEP PC MR

Feet support for easy and accurate feet positioning. Flexible handles on both sides, two integrated indexing positions. Made of MR compatible polycarbonate.

ART.-NR.	P10107-237	FeetSTEP PC MR
----------	------------	----------------



KneeSTEP Elevation Block PC MR

Distance cushion for the elevation of the KneeSTEP with integrated indexing system. Made of MR compatible polycarbonate.

ART.-NR.	P10107-238	KneeSTEP Elevation Block PC MR
----------	------------	--------------------------------



Indexing Bar MR

The Indexing Bar MR is used for indexed fitting and positioning of adequate accessories on indexed tabletops from Elekta, Siemens and Varian.

ART.-NR.	P10107-619	Indexing Bar 14 MR Glasfaser for Elekta
	P10107-620	Indexing Bar 14 MR Glasfaser for Varian
	P10107-621	Indexing Bar 14 MR Glasfaser for Pin Indexing



MR STEP Overlay

The MR STEP Overlay is designed to optimize the positioning's stability, precision and reproducibility.

ART.-NR.	P10107-662	MR STEP Siemens Standard
	P10107-667	MR Flexcoil Holder for Head
	P10107-668	MR Flexcoil Holder for Body

TRACKING AND OVERLAY

iBEAM evo Couchtop
CT Overlay
Gold Marker

T O

Tracking and Overlay



See what you treat

iBEAM evo Couchtop

The **iBEAM evo Couchtop** harmonizes perfectly with modern radiotherapy methods such as IMRT, IGRT and many imaging procedures. IGRT requires high-quality kV or MV imaging to ensure optimal image registration and to correct potential misalignments.

The **iBEAM evo Couchtop** is a next-generation patient table for imaging and treatment and guarantees unrivaled in-situ imaging quality. The unique carbon fibre sandwich design of the **iBEAM evo Couchtop** contains no metals and offers increased permeability to radiation with minimal attenuation over the entire width of the entrance angle. It is therefore the perfect solution for IMRT, VMAT and IGRT.

The improved homogeneous construction of the **iBEAM evo Couchtop** patient table ensures high rigidity and strength, thus effectively preventing the patient from sagging and allowing loads of up to 200 kg (440 lb). The integrated indexing system optimizes the accuracy of the patient positioning and its reproducibility, while at the same time saving time. The replaceable table extensions are lightweight, easy to mount and allow flexible patient positioning, quick setup and improved workflows.

The **iBEAM evo Couchtop** also provides a solid foundation for stereotactic accessories (e.g. Fraxion Stereotactic Frames and BodyFIX) for intracranial and extracranial treatment.



iBEAM evo Couchtop – Advantages

WHY

iBEAM evo Couchtop

- + Unique, optimized carbon fibre sandwich construction - low and uniform beam attenuation
- + Excellent imaging quality - perfect for kV and MV imaging during treatment
- + No metal in the treatment area
- + Standardized indexing system - compatible with a wide range of accessories
- + Lightweight and easily replaceable table extensions
- + Fixed or detachable rails available for the entire table length

iBEAM evo Couchtop – Components



iBEAM evo Couchtop EP

The iBEAM evo Couchtop EP is compatible with Elekta Precise PSS.

ART.-NR. P10105-148

iBEAM evo Couchtop EP



iBEAM evo Couchtop CA

The iBEAM evo Couchtop CA is compatible with Siemens ZXT, Varian ETR and the Nucletron Simulix socket with an appropriate iBEAM adapter.

ART.-NR. P10105-163

iBEAM evo Couchtop CA



iBEAM evo Table Extension 415

The iBEAM evo CT Table Extension 415 is designed to support the patient's head and neck area. The iBEAM evo will be extended by 415 mm.

ART.-NR. P10105-412

iBEAM evo Extension 415



iBEAM M evo Table Extension 650

The iBEAM evo CT Table Extension 650 is designed to support the patient's head and neck area. The iBEAM evo will be extended by 650 mm.

ART.-NR. P10105-423

iBEAM evo Extension 650



iBEAM evo Hand Grip Pole

The iBEAM evo Hand Grip Pole allows the patient to hold on during treatment.

ART.-NR. P10107-511

iBEAM evo Hand Grip Pole



Indexing Bar Carbon and Standard

The Indexing Bar allows indexing and positioning of compatible surface mounted accessories.

ART.-NR. P10107-409

Indexing Bar 14 Carbon for Elekta (2 pcs)

P10105-110

Indexing Bar 14 Standard for Elekta (3 pcs)



iBEAM evo Couch Adapter

Allows the BrainLAB Couchmount system to be attached to Varian Exact. Please check with your local Elekta representative for compatibility with the Elekta Precise PSS.

ART.-NR. P10105-149

iBEAM evo Couch Adapter



iBEAM evo Removable Rails EP

The detachable rails are attached to the side of the iBEAM evo Couchtop EP and can be easily removed between the treatments.

ART.-NR. P10105-551

iBEAM evo Removable Rails EP

iBEAM evo CT Overlay quick-release mechanism with no metal components.



iBEAM evo Couchtop – Components



System HeadSTEP iBEAM evo Extension



The HeadSTEP iBEAM evo extension is designed for routine head and shoulder immobilization at the iBEAM evo Couchtop and extends the end of the iBEAM evo couchtop by 515/615 mm. Includes height adjustments with 23 angles and shoulder adapter. Consisting of:

HeadSTEP iBEAM evo Basic Module (P10107-402/472)
 Pillow A, B, C, D, Y, Z, Distance Plate (P10107-200/201/202/203/204/205/206)
 HeadSTEP Shoulder Adapter Extension (P10107-407)

ART.-NR.	P10107-702	System HeadSTEP iBEAM evo Extension
	P10107-708	System HeadSTEP iBEAM evo Extension long

System HS iBEAM evo extension PushPIN



The HeadSTEP iBEAM evo extension Push PIN. is designed for routine head and shoulder immobilization. Consisting of:

HS iBEAM evo extension Basic Module PushPIN (P10107-414/416)
 Pillow A, B, C, D, Y, Z PushPIN (P10107-244/245/246/247/250/251)
 Distance Plate PushPIN (P10107-252)

ART.-NR.	P10107-712	System HS iBEAM evo extension PushPIN
	P10107-709	System HS iBEAM evo extension PushPIN long

System HS iBEAM evo extension S-TYPE



The HS iBEAM evo extension S-TYPE is designed for routine head and shoulder immobilization. Consisting of:

HS iBEAM evo extension Basic Module S-TYPE (P10107-415/419)
 Pillow A, B, C, D, Y, Z, Distance Plate (P10107-200/201/202/203/204/205/206)
 Pillow Adapter S-TYPE (P10107-253)

ART.-NR.	P10107-716	System HS iBEAM evo extension S-TYPE
	P10107-717	System HS iBEAM evo extension S-TYPE long

CT Overlay

The **iBEAM evo CT Overlay** and the **CT STEP** facilitate new potentials for treatment planning and simulation. The iBEAM evo CT Overlay is identical in design, geometry and dosimetric properties with the iBEAM couchtop and offers the total department solution in combination with an iBEAM evo couchtop (installed on the linac table).

The **iBEAM evo CT Overlay** rests above the plane of the original CT cradle. The digital removal of the cradle provides the capability to take the beam attenuation and dosimetric aspects of the iBEAM evo couchtop into account of your treatment planning data set. By utilizing the same tabletop configuration for planning and treatment, both patient position and beam modeling can be accurately represented and replicated.

The **integrated indexing system** optimizes patient positioning accuracy and reproducibility, reducing patient setup time, minimizing patient setup inaccuracy further in the treatment chain, and maximizing the stability of positioning devices. The iBEAM evo interchangeable extensions are light, easy to attach and enable flexible patient positioning, rapid patient setup and improved clinical workflow throughout the oncology center. The **iBEAM evo CT overlay** and **CT STEP** also address the clinical requirements for intra- and extra-cranial stereotactic treatments, providing a solid foundation for stereotactic hardware. Furthermore they provide the necessary interfaces to connect BodyFIX or Head-FIX frames.



CT Overlay – Advantages

WHY

CT Overlay

- + Increased application possibilities for radiation planning and simulation
- + Integrated indexing system
- + Optimized stability, precision and position reproducibility
- + High quality performance but easy handling
- + Specially designed to reduce image artifacts
- + Quick and easy installation and removal
- + CT Overlay is available for various vendor's CT models
- + Interfaces for stereotactic frames HeadFIX and BodyFIX

CT Overlay – Components



CT STEP Overlay

The CT STEP is designed to optimize the positioning's stability, precision and reproducibility.

ART.-NR.	P10107-613	CT STEP Basic Module 2100mm
	P10107-614	CT STEP Basic Module 2400mm
	P10107-615	CT STEP Interface Siemens P 20
	P10107-616	CT STEP Interface Philips
	P10107-617	CT STEP Interface GE
	P10107-618	CT STEP Interface Toshiba
	P10107-662	MR STEP Siemens Standard



iBEAM evo CT Overlay

The iBEAM evo CT Overlay is identical in design, geometry and dosimetric properties with the iBEAM evo couchtop.

ART.-NR.	P10105-160	GE CT Lightspeed/Discovery family (GT/VT 1700 cradle)
	P10105-160	GE PET CT Optima/Discovery family (GT/VT 1700 cradle)
	P10105-169	Philips Brilliance/Ingenuity/Diamond Select Family
	P10105-165	Siemens Somatom Sensation family (P20/30 cradle)
	P10105-180	Siemens Somatom Definition family (PHS 1A cradle)
	P10105-181	Siemens Somatom Definition family (MPT/MPT-2 cradle)
	P10105-171	Toshiba Aquilion family (CBTB-030A cradle)



iBEAM evo Table Extension 415

The iBEAM evo CT Table Extension 415 is designed to support the patient's head and neck area. The iBEAM evo CT Overlay will be extended by 415 mm.

ART.-NR.	P10105-412	iBEAM evo Extension 415
----------	------------	-------------------------



iBEAM evo Table Extension 650

The iBEAM evo CT Table Extension 650 is designed to support the patient's head and neck area. The iBEAM evo CT Overlay will be extended by 650 mm.

ART.-NR.	P10105-423	iBEAM evo Extension 650
----------	------------	-------------------------



iBEAM evo Hand Grip Pole

The iBEAM evo Hand Grip Pole allows the patient to hold on during the examination.

ART.-NR.	P10107-511	iBEAM evo Hand Grip Pole
----------	------------	--------------------------



Indexing Bar Carbon and Standard

The Indexing Bar allows indexing and positioning of compatible surface mounted accessories.

ART.-NR.	P10107-409	Indexing Bar 14 Carbon for Elekta (2 pcs)
	P10105-110	Indexing Bar 14 Standard for Elekta (3 pcs)



Stereotactic Adapter

The Stereotactic Adapter has been specially designed to increase the free space when using the Fraxion Frame or Leksell Coordinate Frame G together with Apex (Add-on-DMLC).

ART.-NR.	P10105-425	Stereotactic Adapter
----------	------------	----------------------



iBEAM evo Frameless Extension

The iBEAM evo Frameless Extension is designed to support the head and neck of the patient during radiotherapy. It extends the tabletop by 437 mm.

ART.-NR.	P10105-414	iBEAM evo Frameless Extension
----------	------------	-------------------------------

iBEAM evo CT Overlay simple steps



To take off the CT Overlay from the arched CT frame press the arrest button.



Lift the CT Overlay to take it off.

CT Overlay – Components

Accurate patient positioning

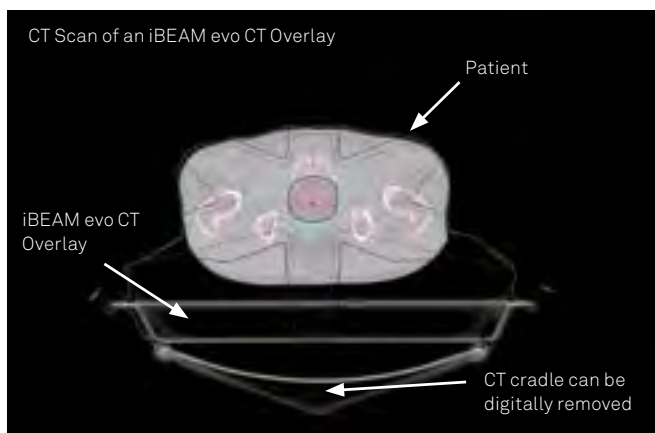
- + Integrated indexing enables positioning of industry standard accessories
- + Optimizes accuracy of patient setups and reproducibility

Designed for stereotactic planning and treatment

- + Specially designed to reduce image artifacts
- + Interfaces for stereotactic BodyFIX and HeadFIX frames

Improved patient capacity and clinical efficiency

- + Quick and easy mounting and removal



The CT Overlays are available for various CT models



Gold Marker

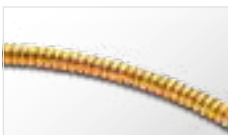
Some organs show a tendency for increased moveability. They change their relative position to the bone structure. To do a precise determination of the target, it requires the application of implanted markers with a good contrast in all imaging modalities. **Gold Marker**, especially the spiraled **Visicoil**, enable a precise and accurate tumor localization with a multitude of imaging methods such as X-ray, kV and MV imaging, CT, CBCT, MRT and Ultrasonography. By using Gold Markers you contribute decisively to the success of high precision radiation.

WHY

Gold Marker

- + Perfect marker for RT, IMRT, IGRT and adaptive radiation therapy
- + Ideal contrasts on the verification imaging at the Linac (kV and MV) as well as CT and MRT
- + For accurate panel positioning
- + Faster performance through simplified positioning
- + Better visibility of organ movements (e.g. prostate, lung, liver)
- + A wide range of diameters and lengths is available
- + Simple matching with CBCT images

Gold Marker – Components



Visicoil

Due to the flexible spiralled structure the Visicoil Gold Markers are shown in a very sharp contrast and free of artifacts.



PolyMark

Polymere based marker, visible in CT and MR without artifacts. Length 3.0 mm and diameter 1.0 mm.

ART.-NR.	FP-0075	VISICOIL Ø 0.35mm x 1cm length
	FP-0076	VISICOIL Ø 0.35mm x 2cm length
	FP-0077	VISICOIL Ø 0.35 mm x 3cm length
	FP-0048	Introducer Needle 20cm (for use with 0.35mm markers) incl. wax
	VC035-010	VISICOIL Ø 0.35mm x 1cm length, preloaded 20cm introducer needle
	VC035-020	VISICOIL Ø 0.35mm x 2cm length, preloaded 20cm introducer needle
	VC035-030	VISICOIL Ø 0.35mm x 3cm length, preloaded 20cm introducer needle
	VC075-005	VISICOIL Ø 0.75mm x 0.5cm length, preloaded 20cm introducer needle
	VC075-010	VISICOIL Ø 0.75mm x 1cm length, preloaded 20cm introducer needle
	VC075-020	VISICOIL Ø 0.75mm x 2cm length, preloaded 20cm introducer needle
	VC075-030	VISICOIL Ø 0.75mm x 3cm length, preloaded 20cm introducer needle

ART.-NR.	MTCTXPM101820	PolyMark 1.0 mm dia x 3 mm loaded in 18 G needle 20 cm
----------	---------------	--



Gold Marker in the Applicator Needle

Marker Seeds are preloaded in the implementation needles, its distal ends are sealed with bonewax. The sterile wrappings contain sets of 2, 3 or 4 sterile applicator needles.

ART.-NR.	GM1231720-1	17G Nadel (20cm) vorbeladen mit je 1 Goldmarker Ø 1,2 mm x 3 mm (1 Stück)
	GM1231720-3	17G Nadel (20cm) vorbeladen mit je 1 Goldmarker Ø 1,2 mm x 3 mm (3 Stück)
	GM1231720-4	17G Nadel (20cm) vorbeladen mit je 1 Goldmarker Ø 1,2 mm x 3 mm (4 Stück)
	GM1251720-1	17G Nadel (20cm) vorbeladen mit je 1 Goldmarker Ø 1,2 mm x 5 mm (1 Stück)
	GM1251720-3	17G Nadel (20cm) vorbeladen mit je 1 Goldmarker Ø 1,2 mm x 5 mm (3 Stück)
	GM1031820-1	18G Nadel (20cm) vorbeladen mit je 1 Goldmarker Ø 1,0 mm x 3 mm (1 Stück)
	GM1031820-3	18G Nadel (20cm) vorbeladen mit je 1 Goldmarker Ø 1,0 mm x 3 mm (3 Stück)
	GM1051820-1	18G Nadel (20cm) vorbeladen mit je 1 Goldmarker Ø 1,0 mm x 5 mm (1 Stück)
	GM1051820-3	18G Nadel (20cm) vorbeladen mit je 1 Goldmarker Ø 1,0 mm x 5 mm (3 Stück)
	GM1001820-1	18G Nadel (20cm) vorbeladen mit je 1 Goldmarker Ø 1,0 mm x 10 mm (1 Stück)
	GM1251730-1	17G Nadel (20cm) vorbeladen mit je 1 Goldmarker Ø 1,2 mm x 5 mm (1 Stück)

ACCESSORIES

TattooSTEP

FoamSTEP

MarkerSTEP

Beekley SPOTS

Bolus

MoldCARE

Vacuum Cushion

AAC

Accessories



Don't you miss something?

TattooSTEP

The **TattooSTEP system** offers safe and precise skin marking of the radiation iso-center with distinctive spots. The quick and easy handling of the TattooSTEP System enables an accurate and efficient handling. The pigments are visibly injected by piercing the needle into the epidermis whereby a permanent skin marking is warranted.

WHY

TattooSTEP

- + No restrictions with personal hygiene and sports
- + High precision
- + Easy handling
- + Extremely light tool holder
- + Hygiene-module as a disposable for each patient
- + Easy material handling
- + No danger of infection because of the long hygiene-modules

TattooSTEP – Components



Hygiene Module

Disposable material, sterile, singly wrapped.
TT 1105 1er Hygienemodul (100 pcs).

ART.-NR. TT 1105

1er Hygienemodul (100 pcs)



Tool Holder

The liner can be put down comfortably.

ART.-NR. TT 1105

Handstückhalterung

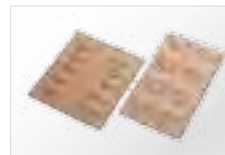


Gigaplast Liquid Band-aid

Gigaplast is a liquid band-aid especially developed for tattoos, to decrease scaling (scab formation) and to sustain the pigments in the epidermis.

ART.-NR. TT 001

Gigaplast Flüssigpflaster

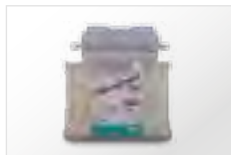


Training Mat

For technique training.

ART.-NR. TT 1238

Übungsmatte

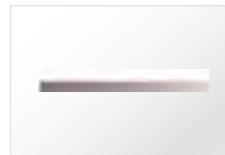


Microbrush Plus Superfine

The Microbrushes are especially suitable for applying the Gigaplast Liquid Band-aid. The fibres are dispersed without dripping or squirting.

ART.-NR. TT 1224

Microbrush Plus Superfine



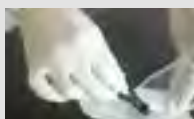
Colors 30 ml

Black.

ART.-NR. TT 101-903

Pigmentfarbe

TattooSTEP simple steps



Connect the hand tool, foot pedal and line adapter. Remove the sterile wrapping from the hygiene-module.



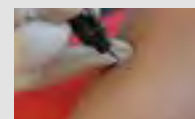
Screw the hygiene-module tightly to the hand tool.



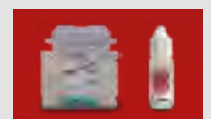
Choose the desired color.



Place a drop of the pigment in the designated indentation on the hygienemodule and shake it to the needle head.



Tripp the foot pedal and start tattooing.



Apply the liquid band-aid with the applicator.

FoamSTEP

The **FoamSTEP positioning pillows** are specially designed to position the patient quickly, stably and comfortably. Are individually applicable for optimal routine positioning of head, neck, body and extremities. The FoamSTEP pillows contain a soft elastic foam material, covered with leakproof, easy to clean surface. The FoamSTEP can be treated with customary disinfectant without forming dried residues or edges.

WHY

FoamSTEP

- + Comfortable positioning
- + Leakproof positioning
- + Easy to clean
- + Available singly or in sets
- + Various forms and sizes
- + Individual forms can be requested

FoamSTEP – Components



FoamSTEP Set

The FoamSTEP Set contains 8 different rolls, wedges, and rectangular positioning pillows.

ART.-NR.	P10107-784	System FoamSTEP
	P10107-792	System FoamSTEP Plus



FoamSTEP Rectangle

The FoamSTEP Rectangle enables quick, stable and comfortable routine positioning.

ART.-NR.	P10107-454	FoamSTEP Rectangular 270 x 180 x 70 mm
----------	------------	--



FoamSTEP Wedge

The FoamSTEP Wedge enables quick, stable and comfortable positionings with different angles of the extremities.

ART.-NR.	P10107-458	FoamSTEP Wedge 270 x 250 x 120 to 10 mm
	P10107-459	FoamSTEP Wedge 270 x 250 x 60 to 10 mm
	P10107-460	FoamSTEP Wedge 270 x 250 x 30 to 10 mm
	P10107-461	FoamSTEP Wedge 130 x 250 x 60 to 0 mm



FoamSTEP Roll

The FoamSTEP Roll enables quick, stable and comfortable head or leg positioning.

ART.-NR.	P10107-455	FoamSTEP Roll 300 x Ø 70 mm
	P10107-456	FoamSTEP Roll 300 x Ø 100 mm
	P10107-457	FoamSTEP Roll 500 x Ø 1350 mm



FoamSTEP Comfort Modul Grey

The FoamSTEP comfort module enables the positioning patients on a stable foam pad.

ART.-NR.	P10107-501	FoamSTEP Comfort Module Grey 900 x 450 x 30 mm
	P10107-502	FoamSTEP Comfort Module Grey 900 x 450 x 15 mm
	P10107-503	FoamSTEP Comfort Module Grey 1800 x 450 x 15 mm
	P10107-504	FoamSTEP Comfort Module Grey 1800 x 450 x 30 mm



FoamSTEP Pillow

Non-indexable FoamSTEP Pillow for prone and supine patient positioning.

ART.-NR.	P10107-463	FoamSTEP Pillow 240 x 250 x 100 mm
	P10107-505	FoamSTEP Pillow Prone

MarkerSTEP Beekley SPOTS

Patient labeling with conventional markers has reached its limitations due to the more and more frequently application of high-precision techniques in radiation therapy. The logical consequence was the development of non-invasive alternatives.

MarkerSTEP and **Beekley SPOTS** provide a precise labeling of the patient with accurate marker lines which do not fade or stain. Due to the long durability the markers do not have to be applied again before each treatment – this saves time and money. All the products are made of breathable, fully elastic material which has been dermatologically tested. Taking a shower is not an issue - moisture can easily escape through the foil.

WHY

MarkerSTEP Beekley SPOTS

- + Accurate determination of the aimed volume through a bigger radiopaque imaging area
- + Precise reference points on the CT, no artifacts
- + Enormous time saving compared to the conventional marking methods
- + No leakage or staining even in case of body contact over a longer period of time
- + Moisture can ooze off through the foil
- + Extremely thin, fully elastic foil with mesh press cuts

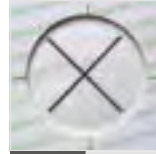
MarkerSTEP – Components



MarkerSTEP CT Marker Green Cross

Radiopaque patient marker with a green crossprint for CT images.

ART.-NR. P10107-601 MarkerSTEP CT Marker Green – Cross



MarkerSTEP Longtime Marker Black Cross

For marking during radiation treatment. Exposure time on the skin appr. 3 weeks.

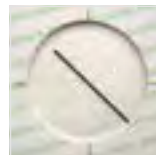
ART.-NR. P10107-605 MarkerSTEP Black – Cross



MarkerSTEP Blank Marker

To cover felt-pen markings or any markings.

ART.-NR. P10107-608 MarkerSTEP Blanko Marker



MarkerSTEP Patient Marker Black Line

For marking during radiation treatment.

ART.-NR. P10107-606 MarkerSTEP Black – Line



MarkerSTEP CT Marker Green – Point

For targeted determination of risk-organs (eye, pain point, anus, etc.).

ART.-NR. P10107-603 MarkerSTEP CT Marker Green – Point



MarkerSTEP Patient Marker Black Arrow

For marking during radiation treatment.

ART.-NR. P10107-607 MarkerSTEP Black – Arrow

MarkerSTEP simple steps



Position patient within the laser cross. Peel off the protective foil.



Adjust the patient marker precisely to the laser beam and stick it on.

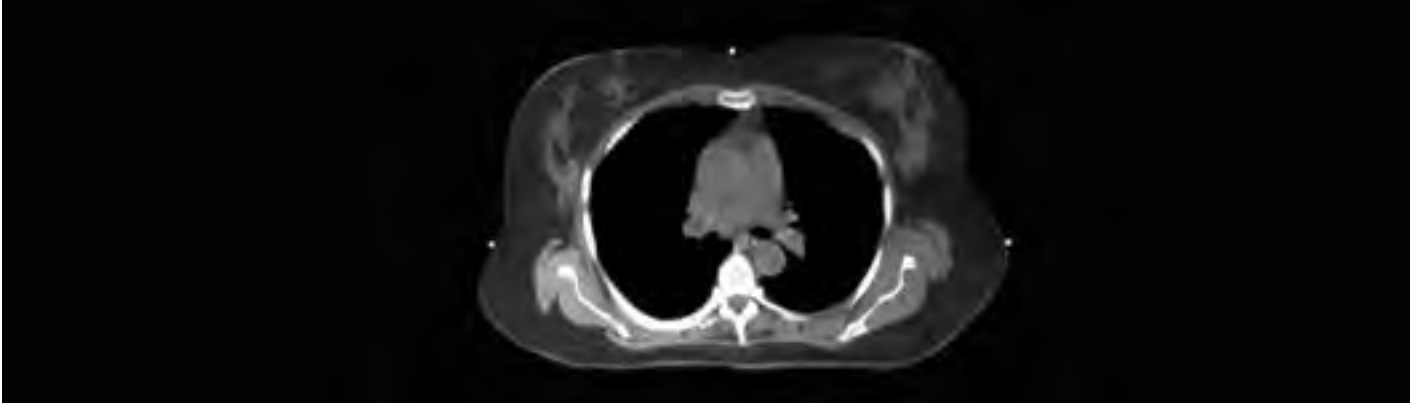


After positioning the marker press it on and peel off the paperboard.



Again press on the marker.

Beekley SPOTS – Components



CT-SPOTS Pellet 2.3 mm



Save time and increase accuracy during treatment planning with Beekley Medical's non-metallic CT-SPOT pellets. Ideal for marking 3-point set-ups and isocenters, these unique markers image brightly during simulation without streaking or artifact.

ART.-NR. CTMR 119

CT-SPOTS Pellet 2,3 mm (85 pcs)

CT-SPOTS Pellet 4 mm

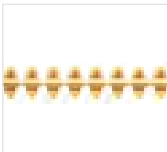


Save time and increase accuracy during treatment planning with Beekley Medical's non-metallic CT-SPOT pellets. Ideal for marking 3-point set-ups and isocenters, these unique markers image brightly during simulation without streaking or artifact.

ART.-NR. CTMR 120

CT-SPOTS Pellet 4 mm (85 pcs)

CT-SPOTS line Ø 2 mm



Continuous non-metallic linear marker designed to delineate fields for accurate CT treatment planning calculations. Flexible line contours easily around corners. Ideal for marking field borders, tangents, scars, sarcomas and larger treatment areas.

ART.-NR. CTMR 118

CT-SPOTS line Ø 2 mm (320 pcs)

CT-SPOTS crosshair 2 x 2 cm



Save time and increase accuracy during treatment planning with Beekley Medical's non-metallic CT-SPOT crosshair. Ideal for marking 3-point set-ups, isocenters, and field borders, these unique markers image brightly during simulation for visibility through multiple slices.

ART.-NR. CTMR 123

CT-SPOTS crosshair 2 x 2 cm (50 pcs)

CT/MR Pinpoint Multimodality



PinPoint for Image Registration is a fiducial marker with a unique conical design to assist in accurate image registration under both CT and MRI. Unique conical design directs probes to a 1.27mm diameter center hole, a registration area 37% smaller than other commonly used fiducial markers.

ART.-NR. CTMR 128

CT/MR Pinpoint Multimodality (30 pcs)

MR PinPoint Ø 6 mm



Communicate a patient's point of pain or specifically identifiable area of interest on every image sequence with PinPoint for small field of view imaging. PinPoint images on just 2–3 slices for precise localization without any distortion to pathology.

ART.-NR. CTMR 187

MR PinPoint Ø 6 mm (40 pcs)

MR-SPOTS Pellet 3 cm



Clearly identify areas of interest in MRI with a bright and consistent image on all MRI sequences. MR-SPOT MRI Skin Markers are available in two styles and four sizes to accommodate a variety of needs. MR-SPOT tubes provide a sharp distinct image. MR-SPOT packets provide optimum patient comfort and help reduce marker indentation.

ART.-NR. CTMR 121

MR-SPOTS Pellet 3 cm (40 pcs)

MR-SPOTS Pellet 1.5 cm

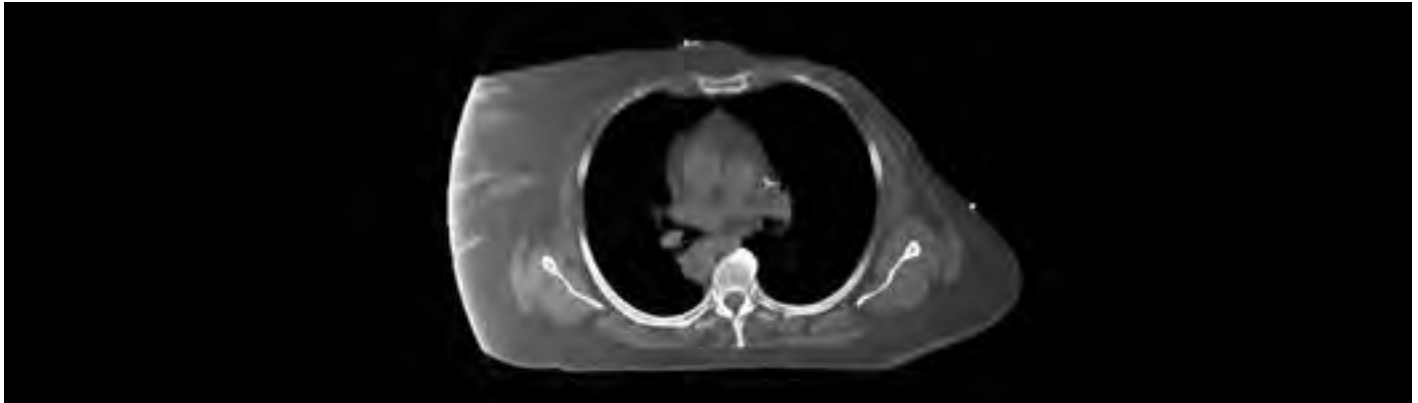


Clearly identify areas of interest in MRI with a bright and consistent image on all MRI sequences. MR-SPOT MRI Skin Markers are available in two styles and four sizes to accommodate a variety of needs. MR-SPOT tubes provide a sharp distinct image. MR-SPOT packets provide optimum patient comfort and help reduce marker indentation.

ART.-NR. CTMR 122

MR-SPOTS Pellet 1,5 cm (40 pcs)

Beekley SPOTS – Components



X-SPOT Pellet 1.5 mm



Immediately identify nipple location on clinical images in mammography. Clinical studies suggest that nipple markers help expedite image critique and interpretation, detect movement, reduce retakes, improve positioning and serve as a valuable landmark in obtaining precise measurement to areas of concern.

ART.-NR. CS 101

X-SPOT Pellet 1,5 mm (150 pcs)

Y-SPOT Pellet 2 mm



Immediately identify nipple location on clinical images in mammography. Clinical studies suggest that nipple markers help expedite image critique and interpretation, detect movement, reduce retakes, improve positioning and serve as a valuable landmark in obtaining precise measurement to areas of concern.

ART.-NR. CS 102

Y-SPOT Pellet 2 mm (132 pcs)

POINTGUARDS Clear Cover round Ø 2.5 cm



Ensure accurate day-to-day reproducibility of set-ups during treatment with Beekley Medical PointGuards. Precut clear adhesive covers provide a watertight seal and stay securely in place for up to 4 weeks. Proven to be less irritating to skin than other methods, PointGuards are quick and easy to use.

ART.-NR. PG 315

POINTGUARDS Clear Cover round Ø 2,5 cm (100 pcs)

S-SPOTS Line Ø 0.33 cm



Continuous burn-out resistant linear marker designed to delineate fields for more accurate CT treatment planning calculations. Thin .33mm line helps differentiate medial and lateral breast tangents when used in conjunction with the thicker CT-SPOT or T-SPOT lines in CT or conventional simulation.

ART.-NR. CS 107

S-SPOTS Line Ø 0,33 cm (363 pcs)

POINTGUARDS round Ø 2.5 cm



Ensure accurate day-to-day reproducibility of set-ups during treatment with Beekley Medical PointGuards. Precut clear adhesive covers provide a watertight seal and stay securely in place for up to 4 weeks. Proven to be less irritating to skin than other methods, PointGuards are quick and easy to use.

ART.-NR. PG 115

POINTGUARDS round Ø 2,5 cm (100 pcs)

POINTGUARDS oval 1.5 x 5 cm



Ensure accurate day to day reproducibility of set-ups during treatment with Beekley Medical PointGuards. Precut clear adhesive covers provide a watertight seal and stay securely in place for up to 4 weeks. Proven to be less irritating to skin than other methods, PointGuards are quick and easy to use.

ART.-NR. PG 215

POINTGUARDS oval 1,5 x 5 cm (75 pcs)

X-SPOT Pellet Floral 1.5 mm



Immediately identify nipple location on clinical images in mammography. Clinical studies suggest that nipple markers help expedite image critique and interpretation, detect movement, reduce retakes, improve positioning and serve as a valuable landmark in obtaining precise measurement to areas of concern.

ART.-NR. CS 601

X-SPOT Pellet Floral 1,5 mm (150 pcs)

S-SPOTS Floral Line Ø 0.33 cm



S-SPOT scar markers help define architectural distortion at the biopsy site by delineating the exact location of incision.

ART.-NR. CS 607

S-SPOTS Floral Line Ø 0,33 cm (363 pcs)

Bolus

Bolus Material is used because of its tissue-like properties to modify the radiation dose and distribution during a treatment. It can also compensate unevenness of the body surface or missing tissues. **Bolus Material** has a very uniform material thickness and withstands a radiation dose of ten thousand gray without loss of quality. Our **Bolus Material** products adapt very well to the contours of the body surface without relevant change in thickness. Bolus material can be simply cut to the desired size or stacked if required. The material is anti-allergenic, nontoxic and can be cleaned with water or alcohol-based cleaners.

Bolus Material is available in two variants: one variant has a skin-like protective film, which increases the durability; the variant without protective layer is softer, adapts more easily to the body surface and adheres better.

WHY

Bolus

- + Compensate the unevenness of the body surface
- + To change the local radiation dose and distribution
- + Easy to clean
- + Anti-allergenic and non-toxic
- + With or without skin-like protective film
- + Available in different sizes

Bolus – Components



Bolus with film

Bolus with a touch skin, which is extremely durable.

ART.-NR.	ART.-NR.	Description
	P10107-637	Bolus Material 30 x 30 x 0,5 cm with film
	P10107-638	Bolus Material 30 x 30 x 1 cm with film
	P10107-639	Bolus Material 15 x 15 x 0,5 cm with film
	P10107-640	Bolus Material 15 x 15 x 1 cm with film
	P10107-652	Bolus Material 20 x 20 x 0,5 cm with film
	P10107-653	Bolus Material 20 x 20 x 1 cm with film
	P10107-658	Bolus Material 40 x 40 x 0,5 cm with film
	P10107-659	Bolus Material 40 x 40 x 1 cm with film



Bolus without film

Skinless Bolus which is soft and self-adhesive.

ART.-NR.	ART.-NR.	Description
	P10107-643	Bolus Material 30 x 30 x 0,5 cm no film
	P10107-644	Bolus Material 30 x 30 x 1 cm no film
	P10107-645	Bolus Material 30 x 30 x 1,5 cm no film

MoldCARE

The moisture-activated **MoldCARE cushions** guarantee an individual, stable and comfortable storage of the head, limbs and other body areas in an efficient, very precise and reproducible manner. The basic material of MoldCARE has a low specific weight and can also be used in dose distribution measurements during CT simulation or therapy. The cushions adjust exactly to the patient's body position necessary for irradiation. **MoldCARE cushions** guarantee comfortable, stable positioning and contribute to patient comfort.

WHY

MoldCARE

- + Optimized workflow
- + Easy to prepare
- + Require little storage space
- + High Quality
- + Enhanced patient comfort

MoldCARE – Components



MoldCARE Head Cushion

MoldCARE Cushions provide customized head support for an efficient, comfortable and reproducible positioning.

ART.-NR.	P10107-633	MoldCARE Cushion 20 x 15
	P10107-634	MoldCARE Cushion 20 x 25
	P10107-635	MoldCARE Cushion 20 x 45



MoldCARE Body Cushion

MoldCARE Cushions provide customized body support for an efficient, comfortable and reproducible positioning.

ART.-NR.	P10107-647	MoldCARE Cushion 60 x 40
	P10107-648	MoldCARE Cushion 60 x 60



MoldCARE Adapter

The MoldCARE Adapter in combination with the MoldCARE Centering disc ensures an individual, stable and comfortable positioning of the head on the HeadSTEP Systems.

ART.-NR.	P10107-641	MoldCARE Adapter
	P10107-642	MoldCARE Centering Disc (5 pcs)

Vacuum Cushions

Vacuum Cushions offer one of the most advanced vacuum cushion technologies available today. Vacuum Cushions create a comfortable, stable and precise mold of the patient's position. The method is very simple: when a negative pressure of appr. 650 mbar is initially generated in the cushion, the cushion retains its shape and ensures integrity of the patient mold for up to six weeks. Vacuum Cushions facilitate reproducible patient positioning, from imaging to treatment and subsequent treatment fractions, while preserving patient comfort and improving the clinical workflow. Manufactured entirely from radiotranslucent materials, Vacuum Cushions provide consistent artifact free image clarity with minimal beam attenuation. The combination of high quality coating materials with a special filling of polystyrene spheres ensures a highly conformal, patient specific mold. Specially coated nylon material enables smooth mold definition, comfortable patient positioning and easy cleaning. All materials are engineered to resist radiation degradation in the clinical environment, providing long life expectancy. Vacuum Cushions are available in **indexed VBAG** and **non-indexed BlueBAG** types.



Vacuum Cushions – Advantages

WHY

Vacuum Cushions

- + Accurate and non-invasive patient positioning
- + Contouring molds stable for weeks
- + Precise, passive patient positioning
- + Flexible application – reliable for routines
- + Easy to clean, re-useable and eco-friendly
- + Easy handling
- + Adaptable to various clinical environments

VBAG – Components



VBAG Rectangular

The VBAG vacuum cushions are used for precise and reproducible molds of the patient's contours and can be indexed.

ART.-NR.	P10107-805	VBAG Rectangular 600 x 800 mm/15 L
	P10107-806	VBAG Rectangular 700 x 1025 mm/30 L
	P10107-807	VBAG Rectangular 700 x 1025 mm/30 L (1x Indexing)
	P10107-808	VBAG Rectangular 700 x 1025 mm/35 L (1x Indexing)
	P10107-809	VBAG Rectangular 850 x 1025 mm/30 L
	P10107-819	VBAG Rectangular 700 x 1625 mm/45 L
	P10107-821	VBAG Rectangular 700 x 2325 mm/65 L
	P10107-823	VBAG Rectangular 700 x 1825 mm/50 L
	P10107-824	VBAG Rectangular 850 x 1625 mm/58 L
	P10107-829	VBAG Rectangular 950 x 1225 mm/45 L
	P10107-831	VBAG Rectangular 850 x 1540 mm/53 L
	P10107-837	VBAG Rectangular 850 x 1825 mm/75 L
	P10107-840	VBAG Rectangular 900 x 2325 mm/117 L
	P10107-846	VBAG Rectangular 700 x 2025 mm/60 L
	P10107-847	VBAG Rectangular 850 x 2025 mm/80 L



VBAG T-Shape

The VBAG vacuum cushions are used for precise and reproducible molds of the upper body contours and can be indexed.

ART.-NR.	P10107-836	VBAG T-Shape 1130 x 1375 mm/51 L
	P10107-839	VBAG T-Shape 1280 x 1325 mm/60 L
	P10107-848	VBAG T-Shape 1375 x 1000 (700)/45 L



VBAG Valve

Valve for the Vacuum Cushion hose.

ART.-NR.	P10107-8043	VBAG Clamp MI (5 pcs)
	P10107-8044	VBAG Valve Set small (5 pcs)
	P10107-8045	VBAG Valve Set large (5 pcs)



VBAG Pentagon and Hexagon

The VBAG vacuum cushions are used for precise and reproducible molds of the patient's contours and can be indexed.

ART.-NR.	P10107-820	VBAG Pentagon-Shape 1050 x 1325 mm/45 L
	P10107-838	VBAG Pentagon-Shape 1200 x 1325 mm/52 L
	P10107-860	VBAG Hexagon 820 (500) x 1500/40 L
	P10107-861	VBAG Hexagon schmal 700 (400) x 950/20 L



VBAG Vacuum Pumpe

Vacuum Pump for VBAG Vacuum cushions.

ART.-NR.	P10107-802	VBAG Vacuum Pump 230V
	P10107-803	VBAG Vacuum Pump Set MI
	P10107-8041	VBAG Vacuum Pump Set valve small
	P10107-8042	VBAG Vacuum Pump Set valve large

VBAG with indexing



Valve types



Valve Set Small



Valve Set Large

BlueBAG – Components



BlueBAG Rectangular

The BlueBAG vacuum cushions are used for precise and reproducible molds of the patient's contours and cannot be indexed

ART.-NR.	P10104-111	BlueBAG Rectangular 250 x 350 mm/2 L
	P10104-113	BlueBAG Rectangular 180 x 280 mm/0,9 L
	P10104-114	BlueBAG Rectangular 250 x 500 mm/2,25 L
	P10104-118	BlueBAG Rectangular 300 x 350 mm/4,5 L
	P10104-119	BlueBAG Rectangular 300 x 500 mm/3 L
	P10104-122	BlueBAG Rectangular 400 x 800 mm/15 L
	P10104-125	BlueBAG Rectangular 500 x 700 mm/15 L
	P10104-129	BlueBAG Rectangular 650 x 700 mm/20 L
	P10104-130	BlueBAG Rectangular 650 x 1000 mm/30 L
	P10104-132	BlueBAG Rectangular 650 x 1500 mm/75 L
	P10104-135	BlueBAG Rectangular 700 x 1000 mm/35 L
	P10104-137	BlueBAG Rectangular 1000 x 1000 mm/45 L
	P10104-139	BlueBAG Rectangular 850 x 1000 mm/30 L
	P10104-143	BlueBAG Rectangular 1000 x 1500 mm/80 L
	P10104-147	BlueBAG Rectangular 1000 x 2000 mm/120 L
	P10104-156	BlueBAG Rectangular 1000 x 1500 mm/30 L
	P10104-159	BlueBAG Rectangular 1000 x 2300 mm/80 L
	P10104-164	BlueBAG Rectangular 820 x 1500 mm/40 L
	P10104-319	BlueBAG Rectangular 250 x 350 mm/1,7 L



BlueBAG T-Shape and H-Shape

The BlueBAG vacuum cushions are used for precise and reproducible molds of the upper body contours and cannot be indexed.

ART.-NR.	P10104-501	BlueBAG T-Shape 650 x 650 mm/7 L
	P10104-505	BlueBAG T-Shape 1000 x 1300 mm/50 L
	P10104-506	BlueBAG H-Shape 900 x 1100 mm/31 L
	P10104-511	BlueBAG T-Shape 1000 x 1300 mm/40 L



BlueBAG Pentagon

The BlueBAG Pentagon shaped vacuum cushions are used for precise and reproducible molds of the patient's upper body contours and cannot be indexed.

ART.-NR.	P10104-500	BlueBAG Pentagon-Shape 1000 x 1300 mm/45 L
----------	------------	--



BlueBAG Clamps

The BlueBAG Clamps locks the tube of the vacuum cushion. The enclosed gasket bolt locks the cushion permanently.

ART.-NR.	P10104-005	BlueBAG Clamp (5 pcs)
----------	------------	-----------------------



BlueBAG Sealing Pin

The Sealing Pin is used to close the tube of the Vacuum Cushion.

ART.-NR.	P10104-168	BlueBAG Sealing Pin (10 pcs)
----------	------------	------------------------------



BodyFIX Vacuum Pump P3

The BodyFIX Vacuum Pump P3 contains two independent high-performance pumps.

ART.-NR.	P10102-150	BodyFIX P3 Vacuum Pump
----------	------------	------------------------



Tube Connector

The Tube Connector connects the tube of the Vacuum Pump with the Vacuum Cushion.

ART.-NR.	03-999-1253	Tube Connector 4 mm to 4 mm (10 pcs)
----------	-------------	--------------------------------------



BlueBAG Tube P3

Tube between Vacuum Pump and Vacuum Cushion.

ART.-NR.	P10104-024	BlueBAG Tube P3
----------	------------	-----------------

Contact

ORION FRANCE
2 Avenue du General
Balfourier, 75016 Paris, France
@ info@orion-france.com
T +33 142 886 841
F +33 955 169 759
w www.orion-france.com