

Ultrasound-Guided Breast Biopsy Phantom



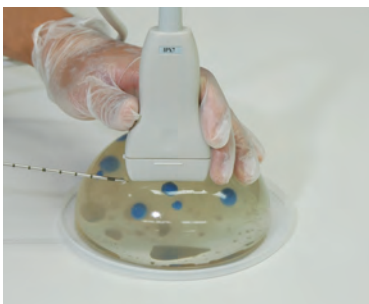
Combination of the two types of breast phantoms provides step-by-step development of skills in needle biopsy. The transparent phantom facilitates improvement of the hand-eye coordination through comparison of clear sonogram, direct observation of targets and the needle path. The opaque phantom includes hyperechoic and hypoechoic targets that allow training in localization of the targets and collection of the specimens. Each phantom contains 12 targets in 2 sizes. Targets are embedded in three layers to provide opportunities of working with a variety of needle paths. Fine Needle Aspiration Biopsy (FNAB), Core Needle Biopsy (CNB) and Mammotome biopsy can be performed under ultrasound guidance.

Features

Step1

Transparent

Hand-Eye Coordination
Visualization of the targets and the needle tip

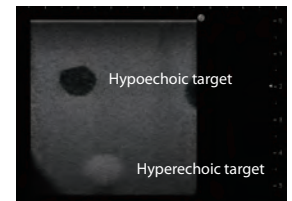


- Transparent tissue allows direct observation of the targets and the needle path
- Twelve hyperechoic targets are embedded

Step2

Opaque

Acquisition of skills in safe and reliable needle biopsy



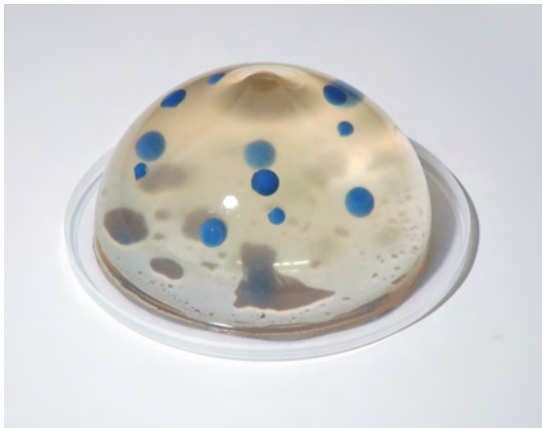
- Opaque tissue provides training in localization of targets under ultrasound guidance
- Six hyperechoic targets and six hypoechoic targets are embedded (targets: 2 sizes)

- Tissue of the breast phantom(s) represents softness and resistance of the mammary gland
- Excellent image quality
- Targets are colored to confirm successful sampling
- Targets are embedded in three levels to allow training in needle access with different angles and depth.
- Ultrasound-guide Fine Needle Aspiration Biopsy (FNAB), Core Needle Biopsy (CNB) and Mammotome biopsy can be performed.

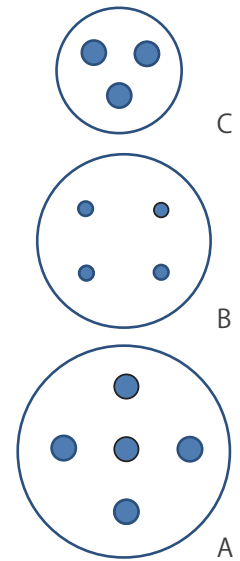
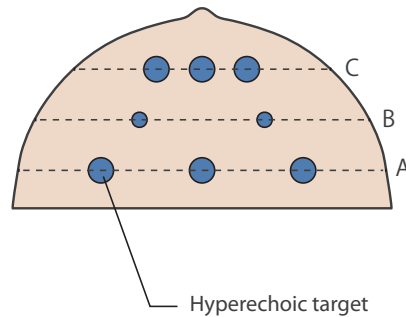
*Phantoms are disposable.

Specifications

Transparent type



Targets in the breast phantom

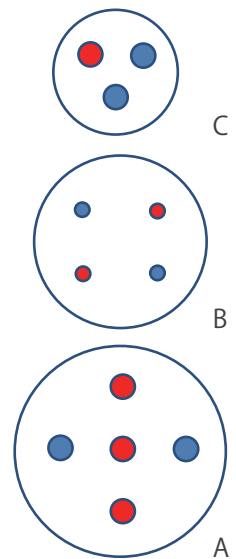
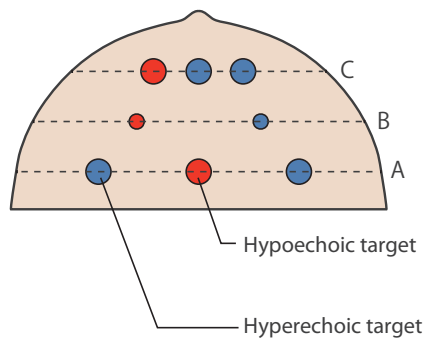


Size of targets: 6 mm dia. and 10mm dia.
 Type of targets: Hyperechoic (blue)
 Number of targets: 12 pieces
 Phantom size: 136mm dia.x70mmH
 Phantom weight: 700g

Opaque type

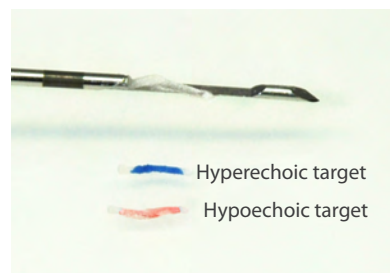


Targets in the breast phantom



Size of targets: 6 mm dia. and 10mm dia.
 Type of targets: Hyperechoic (blue),
 Hypoechoic (red)
 Number of targets: 12 pieces
 Phantom size: 136mm dia.x70mmH
 Phantom weight: 700g

Sampled targets



US-9

- Duo Set: 1387-000 (transparent + opaque type)
- Transparent Set: 11387-100 (1 pair of transparent type)
- Opaque Set: 11387-200 (1 pair opaque type)