

# MagicMaX

*iba*

Quality Control in Medical x-ray Imaging  
Multimeter, kV-Meter, Dosimeter



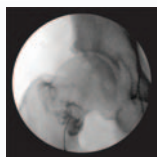
The multimeter solution



MagicMaX is the optimized solution for advanced beam verification and quality assurance in all x-ray imaging modalities



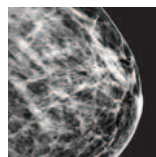
Radiography



Fluoroscopy



Dental



Mammography



Uniquely Efficient  
enabling one-shot full QA

Uniquely Versatile  
integrating in any workflow  
and QA need

Uniquely Powerful  
providing expert level  
comprehensive data

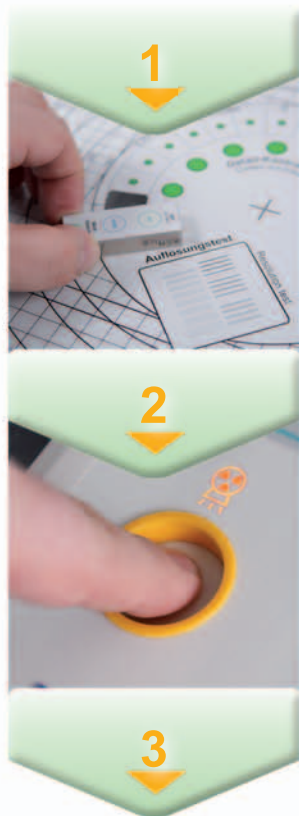
Uniquely **MagicMaX**





# Uniquely Efficient

## the “one shot full QA” solution



Position micro footprint  
detector on the test plate

One single exposure

### The one-shot full QA solution

MagicMaX in combination with test plate Primus empowers fastest and earliest quality assurance.

- dose acceptance plus image quality
- in one single setup
- with only one x-ray exposure

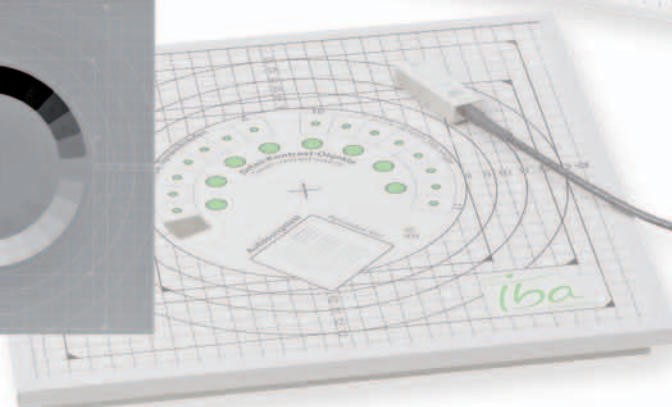
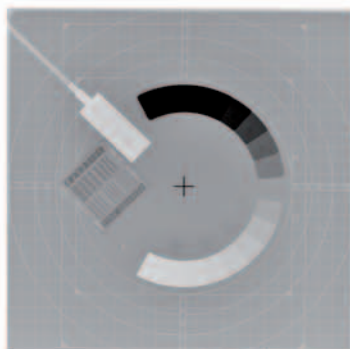
### Fastest workflow, shorter QA, higher machine uptime

- fast setup on the imaging device
- “plug and play” solution by design
- one exposure only, no need for repeated room entering



Full QA with full beam data...

...and image quality with unobstructed  
view at the test plate



# Uniquely Versatile

adaptable to any workflow QA need

## MagicMaX for all needs

- Fully customizable solution to fit your needs, your workflow and your budget
- MagicMaX mAs-Clamp  
Unique invasive and noninvasive measurements integrated in one tool
- Flexible computer hardware  
Use your own laptop or optional IBA mini notebook



## MagicMaX Multimeter with connected:

- XR-multidetector for Radiography, Fluoroscopy and Dental
- XM multidetector for Mammography



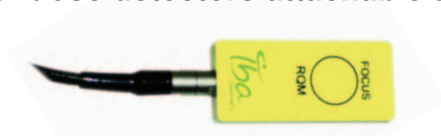
Connect a second dose sensor to the MagicMaX for simultaneous entrance and exit dose measurement

Connect the MagicMaX mAs-clamp\* for unique invasive and noninvasive measurements integrated in one tool

*\*availability pending*

Connect the MM-LS MagicMaX Light Probe and verify lux measurements of viewing boxes, image intensifier output and x-ray light fields within a measuring range of 0.1 lx - 10,000 lx

## Additional dose detectors attachable to MagicMaX:



**Detector RQM** - flexible dose detector for mammography



**Detector RQA** - flexible dose detector for radiography, fluoroscopy, dental

# Uniquely Powerful

for conventional and digital applications

## Comprehensive!

MagicMaX is designed to combine workflow efficiency with comprehensive data recording and analysis, making the solution the powerful tool from quick checks down to the most demanding expert level measurements.



## Proven, Certified & Calibrated

MagicMaX has been proven by leading institutions such as the PTB Germany.

NON-INVASIVE PRACTICAL PEAK VOLTAGE  
TOTAL FILTRATION DOSE  
DOSE PER PULSE  
EXPOSURE TIME  
DOSE RATE

## High quality measurements for QA reliability

- Simultaneous measurements of kVp, PPV, time, dose, dose rate, filtration and more...
- Highest 0.1ms time resolution for best data quality
- Measurement of HVL (half value layer)
- Most accurate pulse information
- Anode ripples detectable

	kVP / PPV	Dose	Dose Rate	Time	HVL	Waveform
MagicMaX -Rad/Flu/Dent	40 - 160 kV	50 nGy - 50 Gy	160 nGy/s - 160 mGy/s	0.2 ms - 300 s	1.2 - 8 mm Al	PPV, internal & external* dose rate, mAs*
MagicMaX -Mam	21 - 49 kV *	50nGy - 50Gy	160 nGy/s - 160 mGy/s	0.2 ms - 300 s	0.2 - 0.75 mm Al	PPV, internal & external* dose rate, mAs*
MagicMaX -Dent	40 - 110 kV	50 nGy - 50 Gy	160 nGy/s - 160 mGy/s	0.2 ms - 300 s	1.2 - 8 mm Al	PPV, internal dose rate, mAs**

\* depending on Target/Filtration combination

\*\*depending on detector availability



# Full Control at your Finger Tips

## the MagicMaX Software

### Efficiency and Power

- “View of your choice”: configure the screen to your needs, select between large digital display, scope type waveforms, tables or cards
- Powerful instant storage of screenshots or data export to Excel reports
- Saving all recorded measurements and waveforms for future analysis
- Retrieve and add entire measurement sessions at any time
- Run MagicMaX software on several computers and obtain software upgrades

- ✓ Real waveform figure
- ✓ Save & open sessions
- ✓ Favourite view generator
- ✓ Export via “one click”



# Fully Portable Solution

## the MagicMaX Case

### Remain flexible, stay mobile:

The compact MagicMaX case enables you to have your QA kit with you whenever and wherever you need it.



MagicMaX & Detector in one case

- ✓ Flexibility & mobility
- ✓ Equipment protection
- ✓ Expandable accessories





# Full QA Solutions

extending workflow efficiency in Medical Imaging



## MagicMaX & Test Plate Primus

Multi-modality x-ray imaging QA  
ensuring quality beams and image quality

- one-shot full QA solution
- advanced beam and imaging checks
- fastest workflow, higher machine uptime

## LXcan & Display Q

Quality Assurance for Medical Displays  
ensuring quality images for safer diagnosis

- Spot-Luminance-Meter: distance & screen contact measurements uniquely combined
- fastest workflow guided software



Complete measuring set for digital and conventional radiographic and fluoroscopic x-ray units

# IBA Activities in a Nutshell

IBA delivers solutions of unprecedented precision with a focus in the fields of cancer diagnosis and therapy.

## Diagnostics Portfolio –

### Safer Imaging, Earlier Cancer Detection

- Advanced quality assurance devices for Medical Imaging: Solutions for x-ray diagnosis and patient-dose monitoring
- Unique expertise in the design of cyclotrons: Solutions for radiopharmaceutical tracers incl. production and distribution

## Radiation Therapy Portfolio –

### Fighting Cancer

- Undisputed leader in Particle Therapy: enabling the most precise and effective radiation therapy
- Industry leading QA and dosimetry solutions: maximizing efficiency, minimizing errors, better outcomes
- Imaging fiducial markers: Visicoil enabling high precision tumor targeting

## Sterilization & Ionization –

### Improving Hygiene and Safety of Everyday Life

- Electron accelerators and high power X-Ray solutions: applied in many industries to sterilize medical devices, to cold pasteurize food products or to improve polymer properties

IBA, a Belgian company, is listed on the paneuropean stock exchange EURONEXT and its Annual Reports can be downloaded on the Website: [www.iba-group.com](http://www.iba-group.com).

Contact details:

[info@iba-dosimetry.com](mailto:info@iba-dosimetry.com)

## Europe, Middle East, Africa

IBA Dosimetry GmbH  
Bahnhofstr. 5  
90592 Schwarzenbruck, Germany  
Tel.: +49 9128 607 0  
Fax: +49 9128 607 10

## North America, Latin America

IBA Dosimetry America  
3150 Stage Post Drive, Suite 110  
Bartlett, TN 38133, USA  
Tel.: +1 901 386 2242  
Fax: +1 901 382 9453

## Asia Pacific

IBA Dosimetry Asia Pacific  
No.6, Xing Guang Er Jie Beijing  
OPTO-mechatronics  
Industrial Park (OIP),  
Tongzhou District  
Beijing 101111, China  
Tel.: +86 10 8080 9288  
Fax: +86 10 8080 9299

Distributed by: